

2022

▪ Better Inside, More in Sight ▪

AI MILESIGHT

PTZ Camera Series

V3.0



Milesight Technology www.milesight.com
Tel: +86-592-5922772(8801) - Sales +86-592+5922772(8701) - Support
Mail: sales@milesight.com support@milesight.com

MILESIGHT USA
Tel: +1-800-561-0485
Add: 220 NE 51st Street Oakland Park, Florida 33334, USA
MILESIGHT KOREA
Tel: +82-31-990-7732
Add: 925, Anyang SK V1 Center,
LS-ro 116beon-gil, Dongan-gu, Anyang-si, Korea
MILESIGHT CHINA
Tel: +86-592-5922772
Add: Building C09, Software Park Phase III, Xiamen 361024, Fujian, China



www.milesight.com



Pan, Tilt & Zoom for All-round Security

PTZ to Move Your World

Milesight AI PTZ Camera Series equips with pan, tilt and zoom capacity to provide both sweeping overviews and superb zoom-in details with a single camera. With flexible choices of compact design, 1/1.8" big sensor and 5X to 42X optical zoom, these cameras provide top-of-the-line features you'd expect in high-end PTZ cameras, which supports 4K resolution and intelligent video analysis for those who raise higher security requirements.



R

Real-time & Distinct PTZ Capacity

Milesight AI PTZ Camera Series is designed for exceptional coverage of large areas and superb zoom-in details. Equipped with a variety of unique features and precise pan/tilt/zoom, the cameras stand out for offering active object tracking, quick orientation and sharp images.



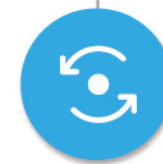
1/1.8" Sensor@36X

Milesight AI 36X Speed Dome Network Camera applies very light-sensitive 1/1.8" sensor whose capacity is approximately twice that of the conventional ones. It is ideal for capturing saturated and sharp images with 36X greatest zoom-level even in pitch dark environments.



4K and 100fps

Milesight AI PTZ cameras provide 2MP resolution at up to 100fps and 4K resolution at up to 30fps for excellent and smooth images. The fluid video performance is optimized with motion blur eradicated by high frame rate while the high pixel density delivers superior image quality, not missing out on details happening in the scene.



Pan, Tilt and Zoom Tasks

Milesight AI PTZ cameras feature 360° continuous rotation and up to 95° tilt, which provides full scene fidelity and perfect image quality all-round in a highest speed of 450°/s. Offering flexible optical zoom from 5X to 42X, the PTZ cameras are fitting for broad and fast changing scenes with instant focus.

I

ntelligence

Equipped with a bunch of cutting-edge smart functions like AI Deep Learning and Auto Tracking, Milesight AI PTZ Camera series offers more powerful and accurate surveillance solutions to help security personnel work more efficiently, which is able to relieve the pressure on human resources.

Convenient PTZ Control	3D Positioning, Keyboard Control
Privacy Protection	PTZ Privacy Mask
Behavior Analysis	Auto Tracking, Loitering, Object Left, Object Removed
Passing	Region Entrance, Region Exiting, Line Crossing
Detection	Motion Detection, Advanced Motion Detection, Tamper Detection, Face Detection
Statistics for Market Intelligence	People Counting

AI Video Analytics

Milesight AI PTZ Camera Series can intelligently filter objects to focus on human and vehicle detection in multiple events such as Region Entrance, Region Exiting, Loitering, Advanced Motion Detection, etc.



Regional People Counting

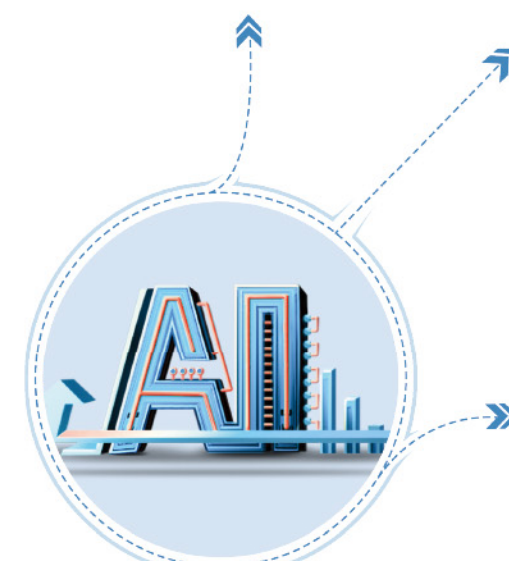
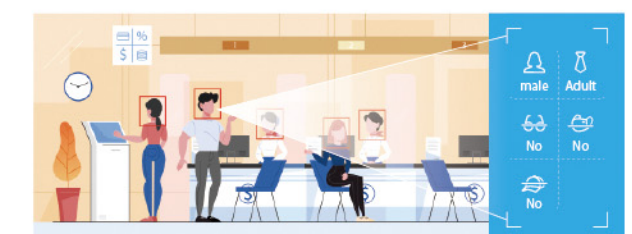
High accuracy and real-time regional people counting based on AI algorithm, with statistic reports for further analysis, helps to make fast decisions on security management and increase the operational efficiency of the business.



Face Detection

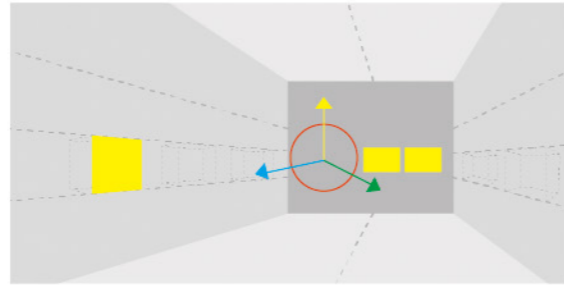
Detect, capture faces and further support advanced functions for various applications.

- **Face Attributes Recognition**
Recognize a variety of face attributes, such as masks, gender, etc.
- **Face Privacy Mode**
Mosaic the recognized faces automatically.



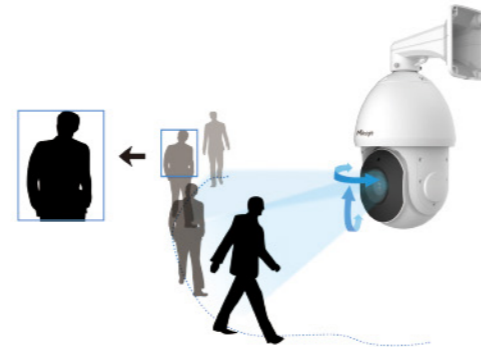
PTZ Privacy Mask

Adopting anonymization and limitation functionality for further privacy protection, Milesight AI PTZ supports 3D Privacy Mask masking in all AI PTZ cameras with their coordinate system, which keeps the specified area masked through manual operations from monitoring no matter how cameras pan/tilt/zoom.



PTZ Auto Tracking

Creating a 3D model within the monitoring range, Milesight AI PTZ cameras mark and track the object after target detection and selection to ensure that the object maintains a fixed proportion for superb tracking views by automatically controlling the direction and zoom-level.

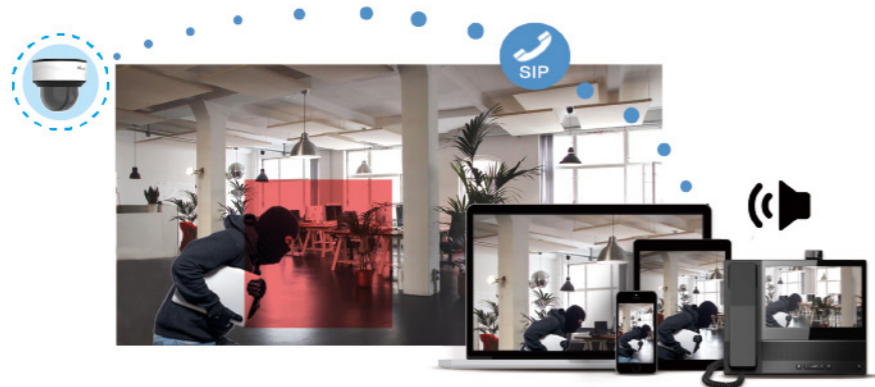


3D Positioning & Keyboard Control

With a comprehensive operating system, Milesight AI PTZ cameras can be easily controlled. To monitor the region of interest for more details, operators can adjust the angle of cameras' view and zoom ratio by just using a mouse or a keyboard.

SIP Solution

Milesight AI PTZ cameras support SIP and Audio I/O, which could integrate with various VoIP telephony systems to build a complete communication system. Then operators can receive an alarm in time and check the real-time video/audio monitoring by VoIP to react instantly.



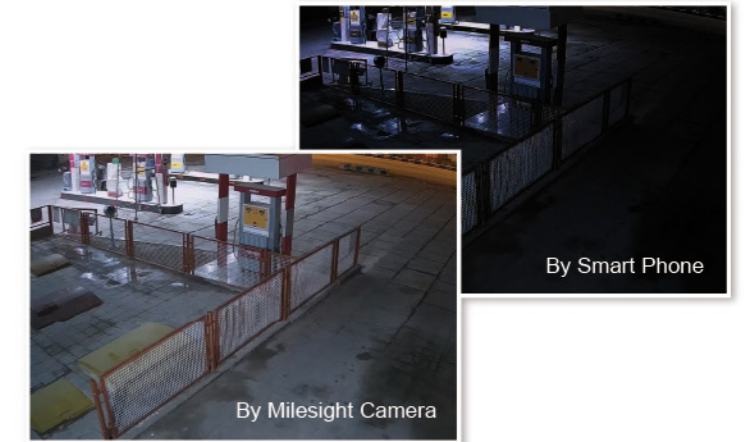
Superior Image Quality

With a combination of extremely sensitive sensors and sophisticated image processing, Milesight AI PTZ Camera Series is able to provide superior, high-resolution footage in any application scenarios.

Image Enhancement	0.001Lux Starlight, Smart IR II Technology
Backlight	3 in 1 Super WDR Pro - 140dB, BLC, HLC
Image Stability	Deblur, EIS, Fog Detection

0.001Lux Starlight

With Sony starlight sensor and advanced image processing, Milesight AI PTZ cameras are able to capture full-color images in extremely low-light conditions reaching 0.001Lux without the need for any supplementary light sources.



Smart IR II Technology

Supporting a viewing range of up to 300m, Milesight AI PTZ cameras with the combination of High Beam and Low Beam can cover the entire monitoring area and adjust the brightness of IR LEDs as the camera zooms in and out by regulating current automatically or manually to ensure uniform light and clear images in complete darkness.



IR Distance up to 300m

3 in 1 Super WDR Pro - 140dB

Milesight upgraded 3 in 1 Super WDR Pro outputs three frames each line, which is able to bring more details especially for moving subjects. What's more, it greatly improves image quality for reducing smear and noisy points. The ratio that the brightest light signal values divided by the darkest light signal values is up to 140dB.



High-quality Deblur

With the algorithm of deblur, Milesight AI PTZ cameras offer fast shutter speeds under certain gain range, which can remove blurring artifacts caused by motion and improve image quality in good light conditions for fast-moving objects.

Comprehensive Defogging

The comprehensive defog performance of Milesight AI PTZ cameras is realized both in software and hardware. It's able to keep the lens from generating the vapors to form the fog in some particular cases with the help of the fan and heater inside. What's more, the camera applied with the image defogging algorithm to digitally filter fog out of view to provide clear images in hazy and foggy weather.

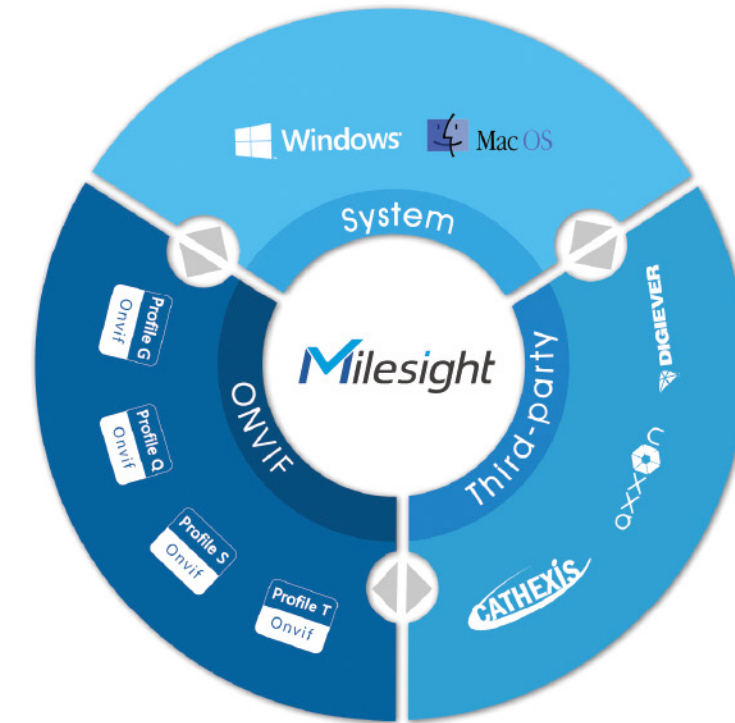


Electronic Image Stabilization

Based on built-in detection algorithms of image offset, Milesight AI PTZ cameras support to detect vibration and correct the images automatically. For outdoor installations, it's an excellent solution to minimize the effects from passing traffic or winds and create stable images.

Broad Interoperability

Integration has become an important factor for interoperability within Milesight AI PTZ Camera Series' applications. The continuous expanding and deepening of the compatibility with Milesight, ONVIF compliant and leading third-party devices and software bring AI PTZ cameras flexible and efficient performance.



Fully Integration

Milesight AI PTZ Cameras fully integrated with Milesight NVRs allow for whole set functions more than basic but vital pan, tilt and zoom management. By deepening communicating with third-party software through CGI, the AI PTZ cameras are opened to wider interoperability and potential.

ONVIF Profile G/Q/S/T

ONVIF profiles make it easy to recognize how ONVIF conformant AI PTZ cameras compatible with other devices. Being ONVIF compliant via Profile G, Profile Q, Profile S and Profile T, the AI PTZ cameras are committed to offering broad interoperability for favorable cooperation.

HTML5 Streaming Ready

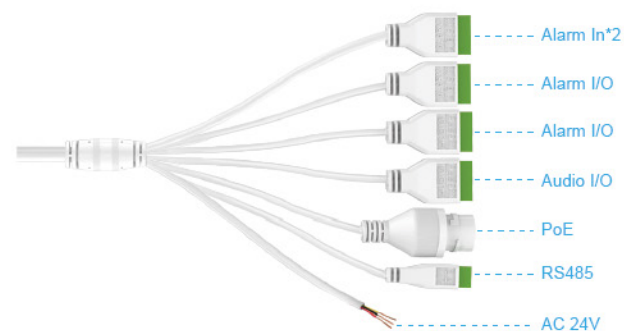
The barrier-free connection between Milesight cameras and browsers are built with HTML5 streaming to access to all configurations and functions without downloading extra plug-in.

Customer-oriented Design

Providing versatile interfaces and completed accessories, Milesight AI PTZ Camera Series allows to enjoy the merits of the camera to the fullest as well as bring reliable IP66, IK10 and 6KV surge protection for wide-range security applications in various temperature conditions.

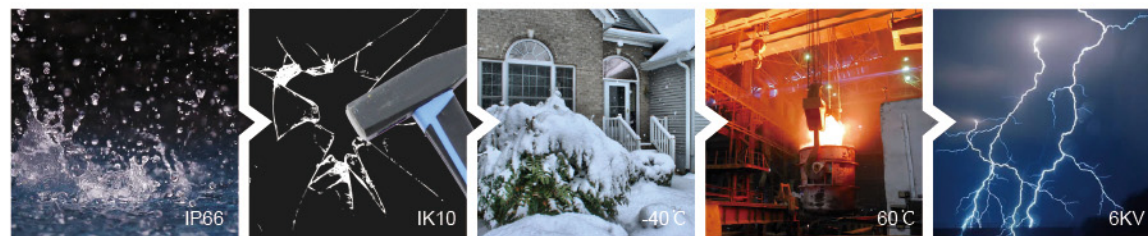
Versatile Interfaces

A full range of interfaces including Audio I/O, Alarm I/O, PoE, RS485 and DC 12V/AC 24V enable functional applications in actual scenarios. And the alternative of directly DC/AC and PoE power let the camera better fit customers' preference.



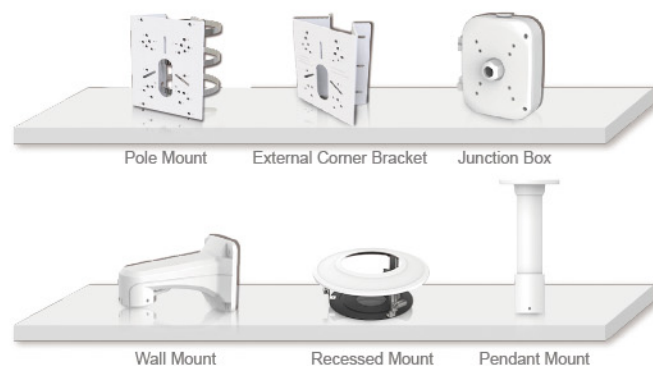
Full Protection

Milesight AI PTZ Camera Series is engineered with IP66-rated and IK10-rated housing to guarantee a stable and reliable operation. It can withstand extreme temperatures as low as -40°C and as high as 60°C and ably avoid lightning strikes and electrical surges with 6KV surge protection in harsh climates.



Complete Accessories

Providing a full range of high-quality accessories to complement efficient and hassle-free installation, Milesight AI PTZ cameras create optimal user experience with superb scenario-adaptive capacity. They facilitate to complete security and surveillance system with abundant unique forms.



PTZ to See the Unseen

To cover the product preferences and needs in worldwide markets, Milesight AI PTZ Camera Series provides two different models of products, Bullet Camera and Dome Camera, for various application scenarios. Equipped with optical zoom from 5X to 42X and up to 4K resolution, it is able to meet different requirements for video surveillance.

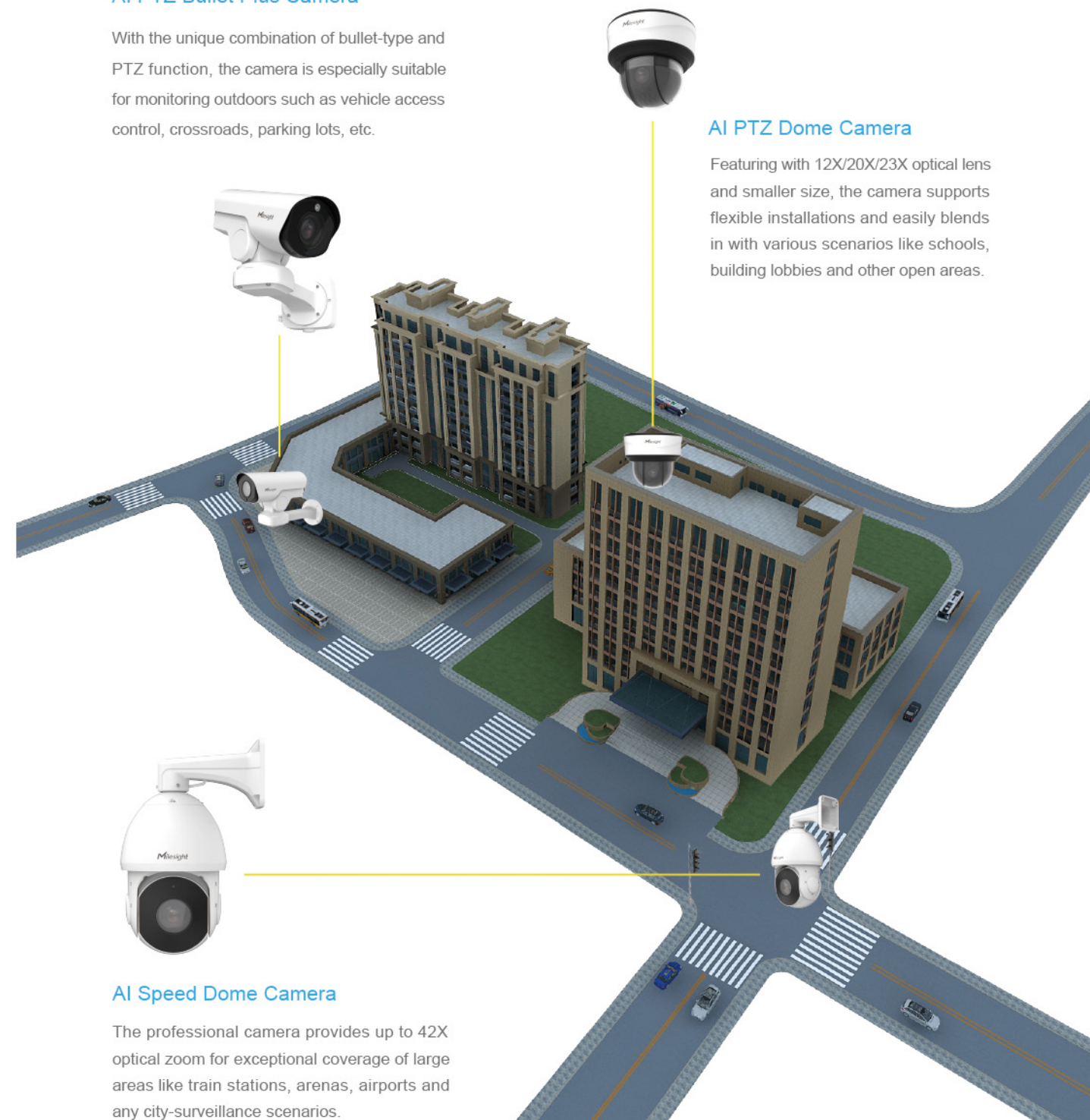
AI PTZ Bullet Plus Camera

With the unique combination of bullet-type and PTZ function, the camera is especially suitable for monitoring outdoors such as vehicle access control, crossroads, parking lots, etc.



AI PTZ Dome Camera

Featuring with 12X/20X/23X optical lens and smaller size, the camera supports flexible installations and easily blends in with various scenarios like schools, building lobbies and other open areas.



AI Speed Dome Camera

The professional camera provides up to 42X optical zoom for exceptional coverage of large areas like train stations, arenas, airports and any city-surveillance scenarios.

AI 12X PTZ Bullet Network Camera



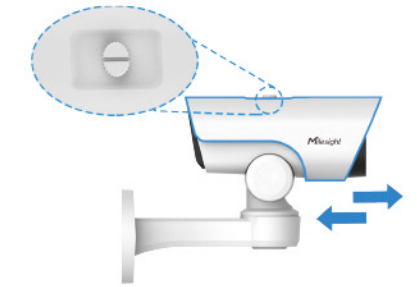
White LED

Creatively engineering 15° viewing angle and adjustable brightness, the White LED fills the role of supplementary light source provider and works as a warning signal at night.



Adaptable Housing-shield

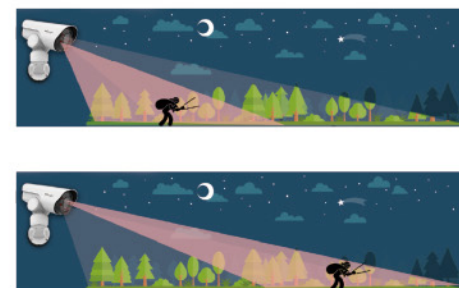
The camera is designed to be reliable under complicated outdoor environments. It comes with a weathershield that protects the camera against rain, snow and sunlight.



- 2MP@100fps & 5MP@30fps
- 360° Endless Pan & 75° Tilt
- 12X Optical Zoom & 16X Digital Zoom
- Smart IR II with 140m IR Distance
- AI Deep Learning
- Auto Tracking
- PTZ Privacy Mask
- 0.002Lux Starlight
- 140dB WDR & HLC & BLC
- Deblur & EIS
- Fog Detection
- IP66-rated Housing
- Audio I/O, Alarm I/O, PoE & DC12V
- Wall Mount & Pedestal Mount



Various Accessories



Smart IR II Technology

With light sets of high and low beams whose illumination is able to reach as far as 140m, the technology lightens views in the dark for superior night vision.

Precise Pan/Tilt/Zoom

Integrating the advantages of both Bullet and PTZ form, the camera offers 360° endless pan and 75° tilt, in combination of 12X optical zoom with autofocus, for offering around-the-clock monitoring in all directions.



Model(Megapixel)	MS-C2961-X12R(T)PC (2MP)	MS-C5361-X12PC (5MP)
Image Sensor	1/2.8" Progressive Scan CMOS	
Lens	5.3-64mm@F1.6-F2.8, 12X Optical Zoom, 16X Digital Zoom	
Field of View	H61°~H5°/D69°~D5°/V36°~V2°	H57°~H4°/D69°~D5°/V44°~V1°
IR Distance	Up to 140m	
Max. Frame Rate	60fps@(1920x1080), 100fps@(1920x1080)(Optional for T Series)	30fps@(2592x1944)
Pan Range/Pan Speed	360° Endless/Pan Manual Speed: 0.1°~50°/s, Pan Preset Speed 50°/s	
Tilt Range/Tilt Speed	-45°~30°; Tilt Manual Speed: 0.1°~25°/s, Tilt Preset Speed: 25°/s	
Preset/Patrol/Pattern	300 Presets/8 Patrols/4 Patterns	
Min. Illumination	Color: 0.002Lux@F1.2 Color: 0.005Lux@F1.6 B/W: 0Lux with IR on	Color: 0.005Lux@F1.2 Color: 0.008Lux@F1.6 B/W: 0Lux with IR on
WDR	140dB Super WDR (Super WDR Pro is optional for T Series)	120dB Super WDR
Video Compression	H.265+/H.265(HEVC)/H.264+/H.264/MJPEG	
Protocol	IPv4/IPv6, ARP, TCP, UDP, RTCP, RTP, RTSP, RTMP, HTTP, HTTPS, DNS, DDNS, DHCP, FTP, NTP, SMTP, SNMP, UPnP, Bonjour, SIP, PPPoE, VLAN, 802.1x, QoS, IGMP, ICMP, SSL	
Dimensions/Weight	160mmX273.5mmX210mm/2Kg (Wall Mount), 218mmX120mmX172mm/1.8Kg (Pedestal Mount)	



AI 5X/20X/23X PTZ Bullet Plus Network Camera



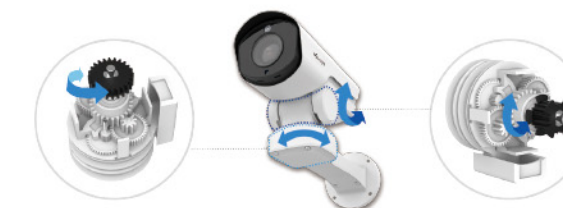
5X/20X/23X Optical Zoom

The 5X/20X/23X Optical Zoom can zoom up to distant objects while still maintaining the clarity, delivering high quality video over the entire zoom image.



New-generation PTZ Motor

New generation motor with sophisticate planetary gear drive design is adopted to ensure a steady turn, which guarantees its robust performance, providing a reliable pan tilt operation.



- 2MP@100fps & 5MP&30fps
- 360° Endless Pan & 75° Tilt
- 5X/20X/23X Optical Zoom
- Smart IR II with 180m IR Distance
- AI Deep Learning
- Auto Tracking
- PTZ Privacy Mask

- 0.001Lux Starlight
- 140dB WDR & HLC & BLC
- Deblur & EIS
- Fog Detection
- IP66-rated Housing
- Audio I/O, Alarm I/O, PoE & DC12V
- New-generation PTZ Motor



Various Accessories



A01 Pole Mount



A03 External Corner Bracket



A62 Junction Box

Model(Megapixel)	MS-C2867-X20TPC (2MP)	MS-C2967-X23R(T)PC (2MP)	MS-C5367-X23PC (5MP)	MS-C8267-X5PC (4K)	MS-C8267-X20PC (4K)
Image Sensor	1/2" Progressive Scan CMOS		1/2.8" Progressive Scan CMOS	1/1.8" Progressive Scan CMOS	
Lens	6.4~128mm@F1.6~F4.0, 20X Optical Zoom, 16X Digital Zoom	5~117mm@F1.5~F3.5, 23X Optical Zoom, 16X Digital Zoom	5~117mm@F1.5~F3.5, 23X Optical Zoom, 16X Digital Zoom	11~55mm@F1.7~F2.1, 5X Optical Zoom, 16X Digital Zoom	6.4~128mm@F1.6~F4.0, 20X Optical Zoom, 16X Digital Zoom
Field of View	H60°~H3°/D67°~D4°/V37°~V1°		H60°~H3°/D69°~D4°/V35°~V2°	H55°~H3°/D68°~D4°/V42°~V2°	H36°~8°/D41°~D9°/V21°~V5°
IR Distance	Up to 180m			Up to 180m	
Max. Frame Rate	100fps@(1920x1080)	60fps@(1920x1080), 100fps@(1920x1080)(Optional for T Series)	30fps@(2592x1944)	30fps@(3840x2160)	
Pan Range/Pan Speed	360°endless; Pan Manual Speed: 0.1°~60°/s, Pan Preset Speed: 60°/s			360°endless; Pan Manual Speed: 0.1°~60°/s, Pan Preset Speed: 60°/s	
Tilt Range/Tilt Speed	-45°~30°; Tilt Manual Speed: 0.1°~30°/s, Tilt Preset Speed: 30°/s			-45°~30°; Tilt Manual Speed: 0.1°~30°/s, Tilt Preset Speed: 30°/s	
Preset/Patrol/Pattern	300 Presets/8 Patrols/4 Patterns			300 Presets/8 Patrols/4 Patterns	
Min. Illumination	Color: 0.001Lux@F1.2 Color: 0.002Lux@F1.6 B/W: 0Lux with IR on	Color: 0.002Lux@F1.2 Color: 0.005Lux@F1.5 B/W: 0Lux with IR on	Color: 0.005Lux@F1.2 Color: 0.008Lux@F1.5 B/W: 0Lux with IR on	Color: 0.006Lux@F1.2 Color: 0.009Lux@F1.7 B/W: 0Lux with IR on	Color: 0.006Lux@F1.2 Color: 0.009Lux@F1.6 B/W: 0Lux with IR on
WDR	140dB Super WDR Pro	140dB Super WDR (Super WDR Pro is optional for T Series)	120dB Super WDR		
Video Compression	H.265+/H.265(HEVC)/H.264+/H.264/MJPEG			H.265+/H.265(HEVC)/H.264+/H.264/MJPEG	
Protocol	IPv4/IPv6, ARP, TCP, UDP, RTCP, RTP, RTSP, RTMP, HTTP, HTTPS, DNS, DDNS, DHCP, FTP, NTP, SMTP, SNMP, UPnP, Bonjour, SIP, PPPoE, VLAN, 802.1x, QoS, IGMP, ICMP, SSL			IPv4/IPv6, ARP, TCP, UDP, RTCP, RTP, RTSP, RTMP, HTTP, HTTPS, DNS, DDNS, DHCP, FTP, NTP, SMTP, SNMP, UPnP, Bonjour, SIP, PPPoE, VLAN, 802.1x, QoS, IGMP, ICMP, SSL	
Dimensions/Weight	110mmX337mmX220mm/2.9Kg			110mmX337mmX220mm/2.9Kg	

AI 12X/20X/23X PTZ Dome Network Camera



Discreet Installation

Easily blending in with the installation environments with recessed installation mount and Smoked Dome Cover, the camera is excellent for identifying people, objects and vehicles in any application where an unobtrusive monitoring is appropriate.



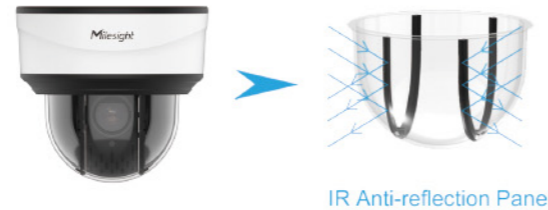
Various Accessories



- 2MP@100fps & 5MP@30fps
- 360° Endless Pan & 95° Auto-flip Tilt
- 12X/20X/23X Optical Zoom & 16X Digital Zoom
- 450°/s Pan Speed & 360°/s Tilt Speed
- Smart IR II with 160m IR Distance
- AI Deep Learning
- Auto Tracking
- PTZ Privacy Mask
- 0.001Lux Starlight
- 140dB WDR & HLC & BLC
- Deblur & EIS
- Fog Detection
- IP66 & IK10 & 4KV Surge Protection
- Audio I/O, Alarm I/O, PoE & DC12V

IR Anti-reflection Panel

The first-ever IR Anti-reflection Panel technically adopted removes IR reflection with exclusive embedded panels.



Precise Pan/Tilt/Zoom

The compact AI PTZ camera with 360° endless pan and 95° auto-flip tilt, in combination of 12X/20X/23X optical zoom with autofocus, allows fast and precise viewing in all directions.



IP66&IK10 Full Protection

The durable camera equips with robust IP66-rated and IK10-rated housing, providing full protection against various impacts and the ingress of dust and water.



Model(Megapixel)	MS-C2971-X12R(T)PC (2MP)	MS-C2871-X20TPC (2MP)	MS-C2971-X23R(T)PC (2MP)	MS-C5371-X12PC (5MP)
Image Sensor	1/2.8" Progressive Scan CMOS	1/2" Progressive Scan CMOS	1/2.8" Progressive Scan CMOS	
Lens	5.3~64mm@F1.6~F2.8, 12X Optical Zoom, 16X Digital Zoom	6.4~128mm@F1.6~F4.0, 20X Optical Zoom, 16X Digital Zoom	5~117mm@F1.5~F3.5, 23X Optical Zoom, 16X Digital Zoom	5.3~64mm@F1.6~F2.8, 12X Optical Zoom, 16X Digital Zoom
Field of View	H61°~H5°/D69°~D5°/V36°~V2°	H60°~H3°/D67°~D4°/V37°~V1°	H60°~H3°/D69°~D4°/V35°~V2°	H57°~H4°/D69°~D5°/V44°~V1°
IR Distance	Up to 160m			
Max. Frame Rate	60fps@(1920x1080), 100fps@(1920x1080) (Optional for T Series)	100fps@(1920x1080)	60fps@(1920x1080), 100fps@(1920x1080) (Optional for T Series)	30fps@(2592x1944)
Pan Range/Pan Speed	360° endless; Pan Manual Speed: 0.1°~450°/s, Pan Preset Speed: 450°/s			
Tilt Range/Tilt Speed	-5°~90° (Auto Flip); Tilt Manual Speed: 0.1°~360°/s, Tilt Preset Speed: 360°/s			
Preset/Patrol/Pattern	300 Presets/8 Patrols/4 Patterns			
Min. Illumination	Color: 0.002Lux@F1.2 Color: 0.005Lux@F1.6 B/W: 0Lux with IR on	Color: 0.001Lux@F1.2 Color: 0.002Lux@F1.6 B/W: 0Lux with IR on	Color: 0.002Lux@F1.2 Color: 0.005Lux@F1.5 B/W: 0Lux with IR on	Color: 0.005Lux@F1.2 Color: 0.008Lux@F1.6 B/W: 0Lux with IR on
Video Compression	H.265+/H.265(HEVC)/H.264+/H.264/MJPEG			
WDR	140dB Super WDR (Super WDR Pro is optional for T Series)	140dB Super WDR Pro	140dB Super WDR (Super WDR Pro is optional for T Series)	120dB Super WDR
Protocol	IPv4/IPv6, ARP, TCP, UDP, RTCP, RTP, RTSP, RTMP, HTTP, HTTPS, DNS, DDNS, DHCP, FTP, NTP, SMTP, SNMP, UPnP, Bonjour, SIP, PPPoE, VLAN, 802.1x, QoS, IGMP, ICMP, SSL			
Dimensions/Weight	Φ183mmX174.8mm/2Kg			



AI 23X/30X/36X/42X Speed Dome Network Camera



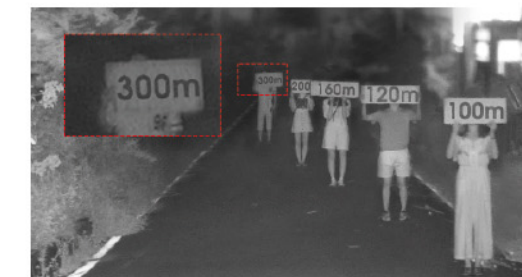
4K, 1/1.8" and 36X in One

The auto focus 36X optical zoom, together with the ultra HD 4K resolution and 1/1.8" very light-sensitive sensor, provides highly detailed zoom-in views in even ultra low light conditions.



Smart IR II Technology

Combining with light sets of High, Mid and Low Beams with IR distance up to 300m, it is ideal for any unlit or low-light environments for second-to-none night vision.



- 2MP@100fps & 5MP@30fps & 4K@30fps
- 1/1.8" Sensor@36X
- AI Deep Learning
- Auto Tracking
- PTZ Privacy Mask
- 0.001Lux Starlight
- 140dB WDR & HLC & BLC
- Deblur & EIS
- Fog Detection
- IP66 & IK10 & 6KV Surge Protection
- Audio I/O, 4*Alarm In, 2*Alarm Out
- PoE & AC24V



Various Accessories



Model(Megapixel)	MS-C2941-X23R(T)PC (2MP)	MS-C5341-X23PC (5MP)	MS-C2941-X30R(T)PC (2MP)	MS-C5341-X30PC (5MP)	MS-C2841-X36TPC (2MP)	MS-C8241-X36PC (4K)	MS-C2941-X42R(T)PC (2MP)	MS-C5341-X42PC (5MP)
Image Sensor	1/2.8" Progressive Scan CMOS				1/2" Progressive Scan CMOS		1/1.8" Progressive Scan CMOS	
Lens	5~117mm@F1.5~F3.5, 23X Optical Zoom, 16X Digital Zoom	5~117mm@F1.5~F3.5, 23X Optical Zoom, 16X Digital Zoom	4.7~141mm@F1.5~F4.0, 30X Optical Zoom, 16X Digital Zoom	4.7~141mm@F1.5~F4.0, 30X Optical Zoom, 16X Digital Zoom	5.7~205.2mm@F1.55~F4.8, 36X Optical Zoom, 16X Digital Zoom	5.7~205.2mm@F1.55~F4.8, 36X Optical Zoom, 16X Digital Zoom	7~300mm@F1.8~F6.5, 42X Optical Zoom, 16X Digital Zoom	7~300mm@F1.8~F6.5, 42X Optical Zoom, 16X Digital Zoom
Field of View	H60°~H3°/D69°~D4°/V35°~V2°	H55°~H3°/D68°~D4°/V42°~V2°	H62°~H3°/D70°~D3°/V37°~V1°	H58°~H3°/D71°~D3°/V44°~V2°	H63°~H3°/D69°~D3°/V38°~V1°	H66°~H3°/D72°~D3°/V41°~V1°	H45°~H2°/D50°~D2°/V27°~V1°	H43°~H2°/D53°~D2°/V33°~V1°
IR Distance	Up to 200m				Up to 300m			
Max. Frame Rate	60fps@(1920x1080), 100fps@(1920x1080) (Optional for T Series)	30fps@(2592x1944)	60fps@(1920x1080), 100fps@(1920x1080) (Optional for T Series)	30fps@(2592x1944)	100fps@(1920x1080)	30fps@(3840x2160)	60fps@(1920x1080), 100fps@(1920x1080) (Optional for T Series)	30fps@(2592x1944)
Pan Range/Pan Speed	360°endless / Pan Manual Speed: 0.1°~400°/s, Pan Preset Speed: 400°/s				360°endless / Pan Manual Speed: 0.1°~400°/s, Pan Preset Speed: 400°/s			
Tilt Range/Tilt Speed	-5°~90°(Auto Flip) / Tilt Manual Speed: 0.1°~320°/s, Tilt Preset Speed: 320°/s				-5°~90°(Auto Flip) / Tilt Manual Speed: 0.1°~320°/s, Tilt Preset Speed: 320°/s			
Preset/Patrol/Pattern	300 Presets/8 Patrols/4 Patterns				300 Presets/8 Patrols/4 Patterns			
Min. Illumination	Color: 0.002Lux@F1.2 Color: 0.005Lux@F1.5 B/W: 0Lux with IR on	Color: 0.005Lux@F1.2 Color: 0.008Lux@F1.5 B/W: 0Lux with IR on	Color: 0.002Lux@F1.2 Color: 0.005Lux@F1.5 B/W: 0Lux with IR on	Color: 0.005Lux@F1.2 Color: 0.008Lux@F1.5 B/W: 0Lux with IR on	Color: 0.001Lux@F1.2 Color: 0.002Lux@F1.55 B/W: 0Lux with IR on	Color: 0.006Lux@F1.2 Color: 0.009Lux@F1.55 B/W: 0Lux with IR on	Color: 0.002Lux@F1.2 Color: 0.005Lux@F1.8 B/W: 0Lux with IR on	Color: 0.005Lux@F1.2 Color: 0.008Lux@F1.8 B/W: 0Lux with IR on
WDR	140dB Super WDR (Super WDR Pro is optional for T Series)	120dB Super WDR	140dB Super WDR (Super WDR Pro is optional for T Series)	120dB Super WDR	140dB Super WDR Pro	120dB Super WDR	140dB Super WDR (Super WDR Pro is optional for T Series)	120dB Super WDR
Video Compression	H.265+/H.265(HEVC)/H.264+/H.264/MJPEG				H.265+/H.265(HEVC)/H.264+/H.264/MJPEG			
Protocol	IPv4/IPv6, ARP, TCP, UDP, RTCP, RTP, RTSP, RTMP, HTTP, HTTPS, DNS, DDNS, DHCP, FTP, NTP, SMTP, SNMP, UPnP, Bonjour, SIP, PPPoE, VLAN, 802.1x, QoS, IGMP, ICMP, SSL				IPv4/IPv6, ARP, TCP, UDP, RTCP, RTP, RTSP, RTMP, HTTP, HTTPS, DNS, DDNS, DHCP, FTP, NTP, SMTP, SNMP, UPnP, Bonjour, SIP, PPPoE, VLAN, 802.1x, QoS, IGMP, ICMP, SSL			
Dimensions/Weight	Φ205mmX308mm/4Kg				Φ205mmX308mm/4Kg			

INTELLIGENT VIDEO SURVEILLANCE SOLUTIONS



AI Mini & Pro Camera Series

Compact Size, Up-most Quality

- Up to 4K Ultra High Definition
- Smart IR II Technology
- 0.001Lux Ultra Low-light
- 3 in 1 Super WDR- 140dB
- Advanced Heat Map

AI LPR Camera Series

Stand-alone LPR Solution

- Advanced 3D Radar Technology
- AI-powered LPR Algorithm
- Black/White List Management
- 95%+ Recognition Accuracy
- 200km/h Recognizable Speed
- Fully Integrated with Milesight NVR/CMS



AI PTZ Camera Series

PTZ to Move Your World

- 360° Flexible Rotation and 42X Optical Zoom
- Up to 4K Ultra High Definition
- Smart IR II Technology
- 1/1.8" STARVIS Starlight Sensor
- PTZ Auto Tracking



NVR Series

All-in-one Solution for Extreme Reliability

- Up to 64-CH Video Input
- Up to 80TB Storage
- 4K Decoding & Recording
- Up to 24*PoE Plug and Play
- ANR/RAID/N+1 Hot Spare
- Enterprise ANPR Management



AI Panoramic Camera Series

One for All, All in 360°

- Up to 12MP Ultra High Definition
- 180°/360° Panoramic View
- On-board/Client-side Dewarping
- Fisheye Auto Tracking
- Advanced Heat Map

VMS Enterprise

- Milesight VMS Enterprise Professional and Intelligent Video Management Software for Medium to Large-scale Projects
- M-VMS Mobile (Android) Manage Anytime with M-VMS Mobile



SOFTWARE

Founded in 2011, Milesight is a fast-growing AIoT solution provider committed to offering the value-added services and cutting-edge technologies. Based on video surveillance, Milesight expands its value proposition into IoT and communications industries, featuring Internet of Things communication, and artificial intelligence technologies as its core. Through a worldwide network of distributors and system integrators in over 120 countries and regions, Milesight disseminates its products and services in comprehensive solutions with a hope to connect physical and digital worlds together to elevate AIoT intelligence to the next level.

INNOVATION

QUALITY

SERVICE

About Milesight

INNOVATION



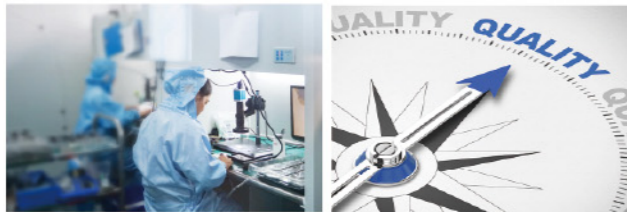
Milesight aims to bring customers more added value through innovative solutions, continually challenging the conventional for a smarter and safer future.

Attaching high importance to the R&D, Milesight keeps a fast and accurate turnaround to the quick developing security market and brings state-of-the-art technologies.



QUALITY

Quality is our foundation. With industry criteria embedded in the design details of Milesight products from inside out, we're in the endless pursuit of precise spirit to make perfection more perfect.



We have attained extensive international standards of certification, including CE/ FCC/LVD/ROHS/ISO9001/UL, etc.

SERVICE

Milesight provides the exclusive and efficient support service that we stay close with our customers to follow the issue from beginning to end to make sure it would be well solved.



In Milesight, we treasure every customer, as a sustainable and win-win partnership is what we've long been striving for.