



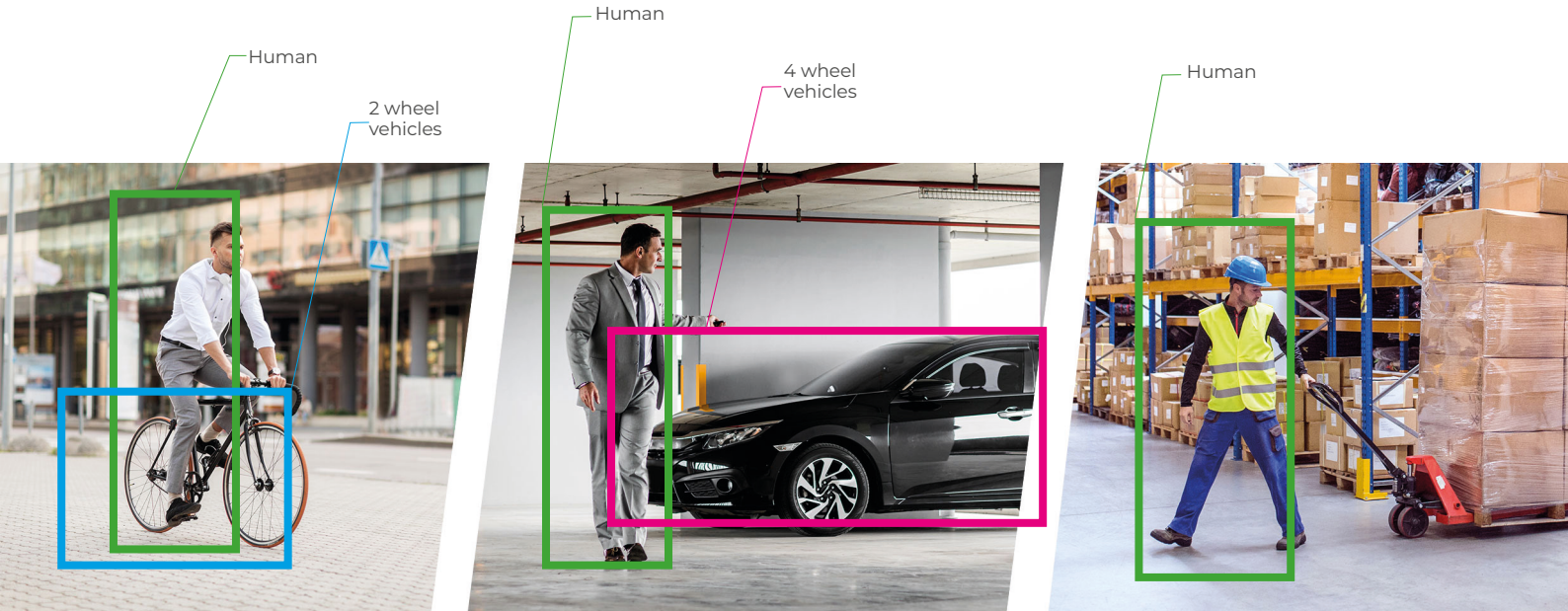
DDA VIDEO ANALYTICS

Detect. Distinguish. Alert.

DDA VIDEO ANALYTICS is part of the Artificial Intelligence features developed by Provision-ISR. Nowadays, the security market is changing fast, and Artificial Intelligence is changing the security industry's rules by increasing detection accuracy and reducing false alarms. Our primary duty, as a manufacturer, is to offer the best AI solutions available.

Detect. Distinguish. Alert.

DDA VIDEO ANALYTICS allows the system to distinguish between humans, 4-wheel vehicles, and 2-wheel vehicles based on smart object recognition technology. Thanks to this technology, the system triggers alarms or sends push notifications only when the desired object is detected and, by doing so, reduces annoying false alarms caused by shadows, light changes, shaking trees, animals, etc.



PROVISION-ISR IP series supporting DDA analytics



IP - EYE SIGHT V2



IP - SMART SIGHT V2

DDA analytics options

DDA LINE CROSSING

The user draws a line in the scene and sets both the crossing direction and crossing permissions. Example: If vehicles are not allowed to cross the line (but humans are), the system will generate an alarm only when a vehicle passes. It will not initiate an alarm if a person crosses the line.

DDA STERILE AREA

The user draws an area in the scene and sets access permissions. Example: If vehicles are not allowed to access the site (but people are), the system will generate an alarm only when a vehicle enters the limited area. Also, the user can configure if entering/exiting the area will trigger an alarm.

DDA HUMANS/VEHICLES COUNTING

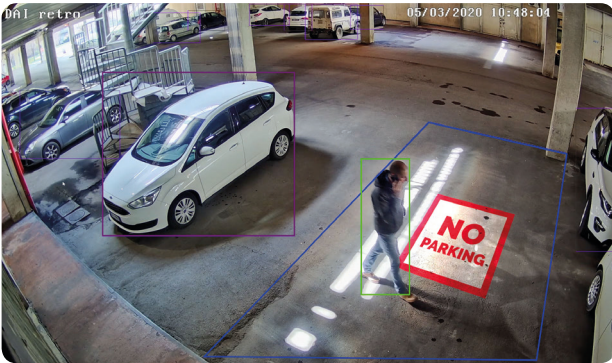
The user positions the camera at a gate entrance/exit to get real-time monitoring. Example: If the observed vehicle counting area is set at the parking entrance, the system will monitor when the parking reaches the maximum number of vehicles allowed.

DDA ANALYTICS APPLICATIONS

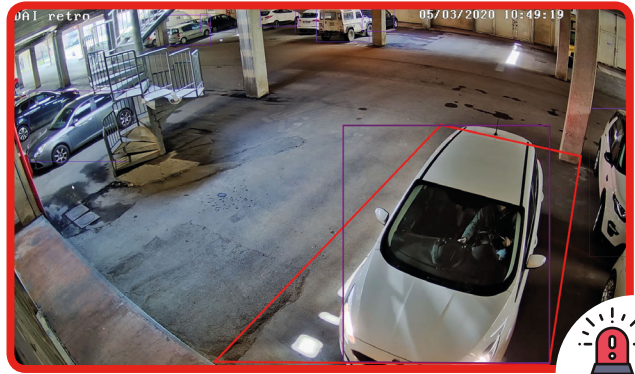
EXAMPLE 1 - NO PARKING AREA - STERILE AREA

HUMANS ALLOWED / VEHICLES NOT ALLOWED

Humans 2 wheels 4 wheels



The system detects and distinguishes the object as a human. The event is registered but will not initiate an alarm.



When the system detects and distinguishes the object as a car that is not allowed to enter the limited area, it will initiate an alarm.

EXAMPLE 2 - PERIMETER PROTECTION

VEHICLES ALLOWED / HUMANS NOT ALLOWED

Humans 2 wheels 4 wheels



The car outside the gate enters the area drawn by the user. When the system detects and distinguishes the car as a vehicle allowed to enter that limited area, it doesn't generate any alarm.

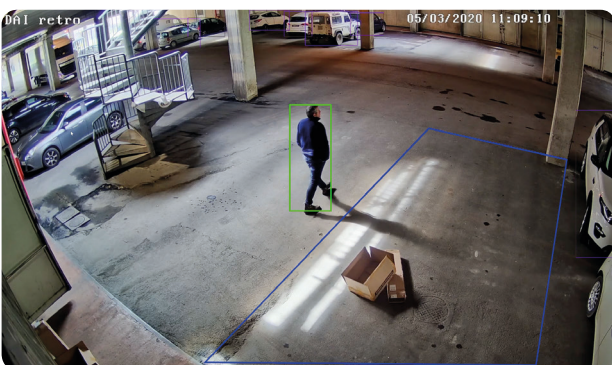


Someone enters the area drawn by the user. When the system detects and distinguishes them as a human, the person trying to climb over the fence generates an alarm.

EXAMPLE 3 - DISTINCTION BETWEEN HUMANS / VEHICLES / OBJECTS

VEHICLES AND HUMANS NOT ALLOWED

Humans 2 wheels 4 wheels



The object left within the limited area doesn't generate any alarm (the system doesn't detect vehicles or humans). The person's shadow casts into the restricted area but doesn't generate an alarm.



When the system detects and distinguishes the person entering the restricted area as a human, it generates an alarm.



PROVISION-ISR: ISRAELI KNOW-HOW FOR A SMARTER AND SAFER WORLD.

Provision-ISR is a fast-growing Israeli company founded in 2007 to meet the demand for high-quality products in the medium segment of the CCTV market.

Our wide range of products includes IP and HD technologies able to respond to the market's diversified demand.

- Advanced CCTV software and APPs developed by our Israeli engineers intended to keep the user experience intuitive and straightforward;
 - A complete range of accessories specifically designed for the CCTV market, making Provision-ISR a One-Stop-Shop for all CCTV product needs.
- We aim at building a more intelligent and safer world by giving security professionals all the tools they need to make the difference: constant training, professional and reliable technical support, and practical marketing tools.

R&D and Marketing Offices:

11 Atir Yeda St, Kfar Saba,
Israel
Postal Code: 4442510
Tel: (972-9) 741 7511
Fax: (972-9) 745 7182

Operational Offices:

No.101, Block 1, Huanuo Building,
Chiwan 6th Road, Nanshan,
Shenzhen
Postal Code: 518068
Tel: (86) 755-2686 1420
Fax: (86) 755-2602 8430M

Logistic center LATAM

Calle 2da., Avenida 3ra.
France Field, Zona Libre de
Colón, República de Panamá
Tel: 507. 430 . 9300
Fax: 507. 430 . 0619

Logistic Center EU:

Orionweg 6-8, 4782 SC,
Moerdijk, Netherlands
Tel: (31) 10 2995 750