



huperVision 4000 v2.0

Tribrid Intelligent Video Surveillance

- Video Surveillance System for IP cameras, HD-SDI cameras and CCTV cameras
- Built-in 64CH matrix display and supporting multiple monitors
- Support ePTZ and video de-warping for fisheye cameras
- Support H.265 video streams of IP Cameras
- Innovative 3D/2D Video Analytics
- Advanced Privacy Protection & Data Security
- Push Event Notification to iPhone/iPad, and Android phones/tablets

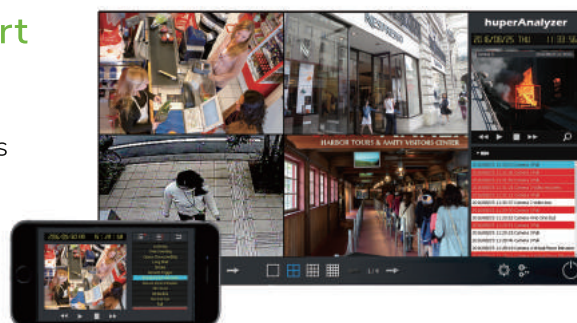
huperVision 4000 v2.0

huperVision v2.0 features intuitive and smart software that enables effectively receiving, displaying and managing real-time videos, recordings and events from multiple video streams in one single interface, including HD-SDI cameras, megapixel IP cameras, 3D stereo cameras, and 960H/D1 cameras. The AI-powered 2D & 3D video analytics features allow users to create customized surveillance solutions for specific industry needs.

Key Features

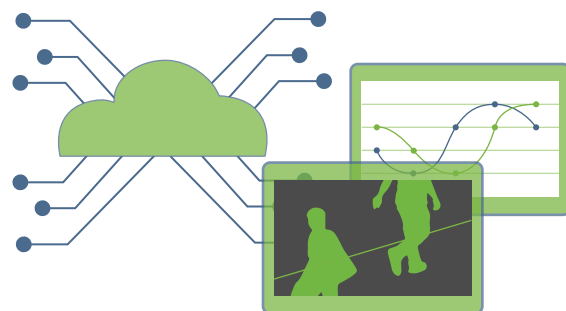
Full-featured 3D / 2D Video Analytics Support

- 27+ innovative 3D / 2D video analytics
- 3D Video Analytics are resistant to light changes and shadows
- Intuitive panel for easy managing video analytics
- Capacity management of people counts from multiple entrances



Seamless System Integration

- Digital inputs/outputs to connect to external equipment
- ODBC interface to access 3D / 2D video analytics database
- POS utility to connect to POS equipment
- huperEvent SDK for building customized event handlers
- SDK available for 3rd party system integration



180° / 360° Fisheye Panoramic Surveillance

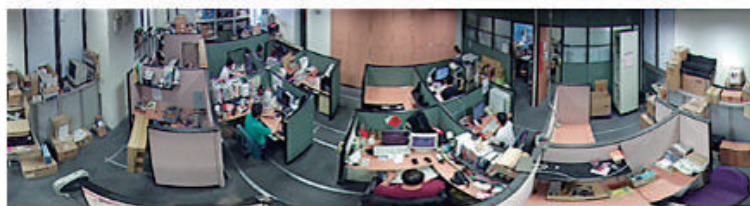
- Real-time video de-warping of 180° / 360° fisheye cameras
- ePTZ control to navigate ROI (Region of Interest) in fisheye cameras
- Panoramic view, dual-view and quad-view of fisheye camera video



360° View



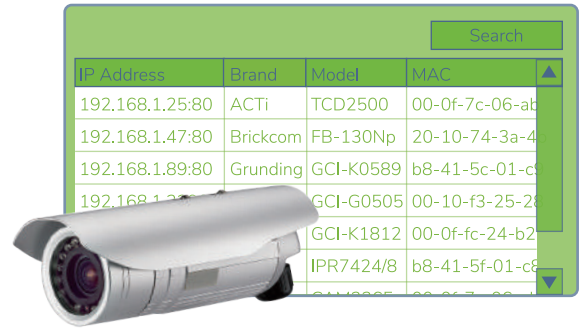
Quad-View



180° Dual-View

Optimization for IP Surveillance

- Support H.265 video streams
- Support dual-stream for display and recording in different video resolutions
- Auto-switch video resolution while zoom in / out
- One-click to search/connect IP cameras in a LAN
- ONVIF support



SeamlessCloud Storage

- Ideal solution for keeping long period of video records
- Zero loss of record data transfer to cloud storage, as well as to DAS, NAS and SAN
- Auto-recycle & quick search video records in external storages



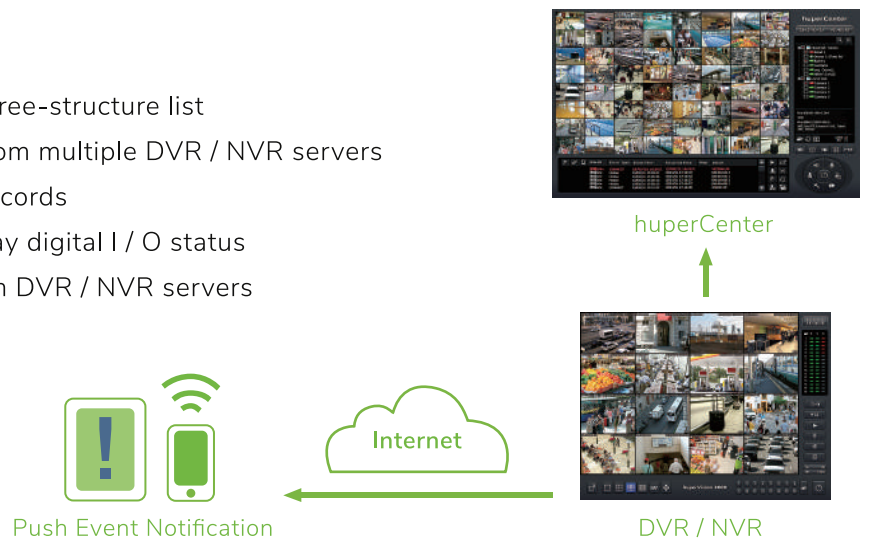
Remote & Mobile Monitoring

- Remote video viewing and PTZ camera control
- Push event notifications to iPhone / iPad, and Android phones / tablets
- Display/replay events of remote DVR / NVR servers
- Two-way voice communication to / from a DVR / NVR servers
- Play alarm sound at remote DVR / NVR servers



huperCenter (CMS)

- Group DVR/NVR servers/cameras in a tree-structure list
- Receive / manage event notifications from multiple DVR / NVR servers
- Display event video and replay event records
- Remote control PTZ cameras and display digital I / O status
- Two-way voice communication to / from DVR / NVR servers
- Support redundant event management



huperVision 4000 v2.0 Product Specifications

| Specifications | |
|-----------------------------------|---|
| Video Input | Up to 64 channels |
| Audio Input | Up to 64 channels |
| Camera Type | Support megapixel IP cameras, HD-SDI digital cameras, 960H cameras, and general CCTV D1 cameras |
| Screen Display | <ul style="list-style-type: none"> Up to 64 split-screen display Support 64/56/49/48/36/30/25/24/20/16/12/9/6/4/1 split-screens, full screen, loop display, and customized split-screen layout Multiple monitors & TV-out to support matrix display |
| Resolution | 1080p, 720p, 960x480/960x576(Progressive), 960x480/960x576 (HD), 960x480/960x576(SW), 720x480/720x576 (HD), 720x480/720x576, 720x480/720x576 (SW), 704x480/704x576 (HD), 704x480/704x576, 704x480/704x576 (SW), 640x480 (HD), 640x480, 640x480 SW, 320x240 |
| Display / Recording Rate | 30/25 FPS (NTSC/PAL) per camera |
| 3D/2D Video Analytics | 3D video analytics x10 / 2D video analytics x17 |
| Video Compression Format | <ul style="list-style-type: none"> H.264, HM (MPEG-4 Like), and Motion-JPEG format Support H.265 video streams of IP cameras |
| Windows OS | Microsoft Windows 10 32/64-bit |
| Language | English, Traditional Chinese, Simplified Chinese, Japanese, Polish, Italian, French, Hebrew, Russian, Danish, Dutch, Serbian, Portuguese, Portuguese (Brazilian), Thai, Croatian, Spanish, Spanish (Mexican), Turkish, Vietnamese, Persian |
| Product Features | |
| Key Features | <ul style="list-style-type: none"> 3-in-1 HD DVR/NVR Surveillance: support megapixels IP cameras, HD-SDI 1080p/720p cameras, and 960H/D1 cameras Built-in 64CH matrix display and supporting multiple monitors Support dual-stream of IP cameras and auto-switch video display resolution Support ePTZ and video de-warping for 180°/360° fisheye cameras Innovative 3D/2D video analytics Intuitive panel for easy managing 3D/2D video analytics Push event notification to iPhone/iPad, and Android phones/tablets Quick Setting Wizard to simplify the system setup SeamlessCloud storage for keeping long period of video records |
| Recording | <ul style="list-style-type: none"> Types: recycle recording, non-stop recording, schedule recording, non-stop smart recording, event recording and time-lapse recording Video/audio synchronized recording (audio formats: 8 bit 8k/32k, 16 bit 8k/32k) The SmartFile technology avoids disk fragmentation and increase system stability for long-term recording |
| Display & Viewing | <ul style="list-style-type: none"> Matrix View provides 64/56/49/48/36/30/25/24/20/16/12/9/6/4/1 split-screens, full screen, loop display and customized split-screen layout Support 4 monitors for a DVR/NVR server, each monitor display up to 64 channels ePTZ feature to navigate ROI (Region of Interest) of camera video easily, and PIP (Picture-in-Picture) preview for quick ROI selection and movement |
| Playback & Search | <ul style="list-style-type: none"> Search video records by camera no, date, time, event types, detection line & zone, and smart search Smart Search includes advanced motion search, and missing & left object search Play up to 16 video records simultaneously Support backward playback and adjustable playback speed |
| 3D / 2D Video Analytics | <ul style="list-style-type: none"> 3D video analytics x10 : 3D People Counter, 3D Area Counter, 3D Vehicle Counter, 3D Virtual Fence, 3D Tailgating Detection, 3D Fall/Stop Detection, 3D Secure Zone, 3D Air-lock Room, 3D Loitering Detection** 2D video analytics x17 : People Counter/People Counter Pro, Flame Detection/Flame Detection Pro, Virtual Fence Detection*, Motion Detection (with object size filtering), Missing & Left Object Detection*, Secure Zone Detection*, Scene Change Detection*, Flow Counting*, Loitering Detection, Smoke Detection, Occupancy Counter, Access Counter, Car Plate Detection, Car Plate Recognition, Video Stabilization 3D video analytics are for indoor/outdoor use, resistant to light and shadow changes A guided setup wizard to connect 3D cameras step by step Intuitive panel for easy managing 3D/2D video analytics Support 3D video analytics in large area Capacity management of 3D/2D people counts from multiple entrances, suitable for chain stores and department stores Support daily count reset, and auto/manual background update |
| Event Notification | <ul style="list-style-type: none"> Push video event notification to iPhone/iPad, and Android phones/tablets Pan PTZ cameras to presets, email/ftp event snapshots, sound alarms, flash messages, maximize event camera video, trigger digital outputs Email event reports daily, weekly or monthly |
| Fisheye Cameras | <ul style="list-style-type: none"> Real-time video de-warping of 180°/360° fisheye cameras ePTZ control to navigate ROI (Region of Interest) in fisheye video Panoramic view, dual-view and quad-view of fisheye camera videoTV-out The video source of TV-out can be from IP cameras and CCTV cameras (worked with 4800/4700 series DVR cards) TV-out video can be selected cameras video, event video, and/or looped camera video |
| Speed Dome Control | <ul style="list-style-type: none"> Advanced speed dome camera control functions, including iris, pan/tilt speed adjustment, auto-loop/auto-pan, and speed dome control by a joystick / computer keyboard On-screen control allows few mouse clicks on camera video to perform pan / tilt movements and zoom in/out operations Auto tracking of a moving object by a speed dome camera *** |
| e-Map | Mark the locations of cameras, I/O devices, and alarms by icons / Animate corresponding device icons when event occurs |
| Remote Viewing & Control TV-out | <ul style="list-style-type: none"> Remote video viewing and PTZ camera control on iPhone/iPad, and Android phones/tablets Display/replay events of remote DVR/NVR servers Two-way voice communication to/from remote DVR/NVR servers Play alarm sound at remote DVR/NVR servers |
| Central Management Solution (CMS) | <ul style="list-style-type: none"> Group DVR/NVR servers/cameras in a tree-structure list Support 64CH event video display on single/dual monitors Receive/manage event notifications from multiple DVR/NVR servers Display event video and replay event records Remote control PTZ cameras, and display digital I/O status Two-way voice communication to/from DVR/NVR servers Support redundant event management |
| Backup & Share | <ul style="list-style-type: none"> Backup video records manually or by schedule Export video records to an AVI file or a self-executable file (.exe). The self-executable file is embedded with digital authentication and password protection Snapshot a video frame for printing or save it as a BMP file with digital watermark Digital watermark verification tool to identify tampered video records Embed an image to a re-saved video record file. Convert normal video records to time-lapse video files |
| Access Control & Stability | <ul style="list-style-type: none"> Multiple levels of access control by cameras & authorities Account manager as a one-place account management Log the access of video records from Remote Apps Auto log-in to Windows system and surveillance site server Support daylight saving and prevent video record database from corruption due to time adjustment Advanced privacy protection and data security |
| TV-out | <ul style="list-style-type: none"> The video source of TV-out can be from IP cameras and CCTV cameras (worked with 4800/4700 series DVR cards) TV-out video can be selected cameras video, event video, and/or looped camera video |
| SeamlessCloud Storages | <ul style="list-style-type: none"> Ideal solution for keeping long period of video records Zero loss of record data transfer to cloud storages, as well as to DAS, NAS and SAN Auto-recycle & quick search video records in external storages |
| Integration | <ul style="list-style-type: none"> Digital inputs/outputs to connect to external equipment ODBC interface to access 3D/2D video analytics database POS utility to connect to POS equipment huperEvent SDK for building customized event handlers SDK available for 3rd party system integration |

Note: 1. * built-in bonus video analytics in huperVision 4000.
2. ** available soon.
3.*** support specific Speed Dome.

4. Flame / Smoke Detection and 3D Video Analytics features require specific cameras to ensure higher accuracy.
5. Specifications are subject to change without notice.