

# NSS and Hope Sculpture:

Specialists  
Collaborate to Deliver  
'Beacon of Hope'



# Case study: COP26 Hope Sculpture, Glasgow

*“The most remarkable thing about this project has been collaborating with these companies and individuals. Their integrity, drive and commitment to make a difference has been inspiring.”*

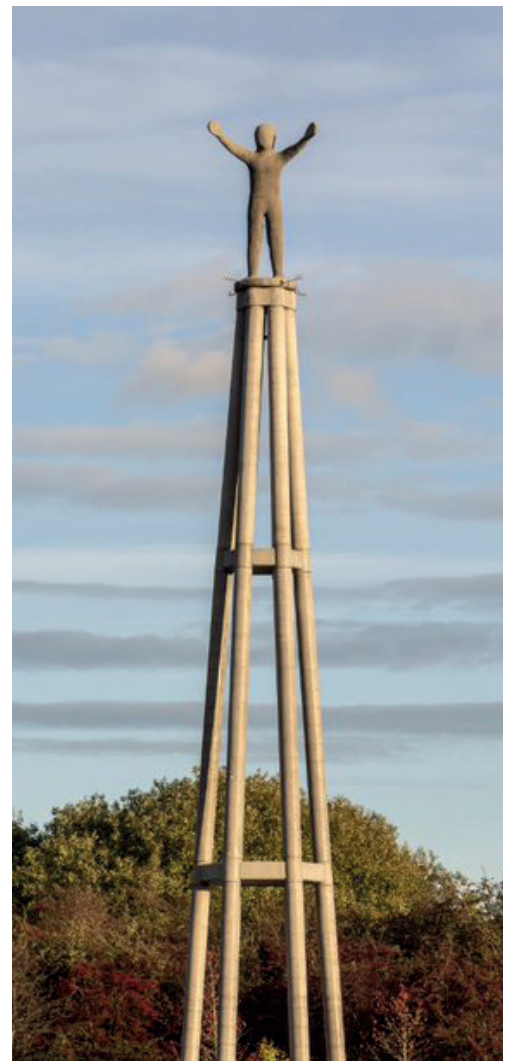
**Natalie Alexopoulos, Hope Project Director**

When world leaders met for the pivotal COP26 summit in Glasgow, the need for action in the face of a growing climate change crisis sparked a spirit of optimism and a desire for collaboration in people throughout the UK.

This spirit is embodied by one of the legacies of the conference – the Hope Sculpture.

A public art installation designed by Stuart Padwick, it features a child reaching out to the future and embracing the surrounding nature. At 23 metres tall, the sculpture incorporates elegant columns constructed from low-carbon, cement-free concrete.

More than 50 companies and organisations, including NSS, contributed to the creation of the piece, and the sheer scale of the project created a need for specialist knowledge and skills.



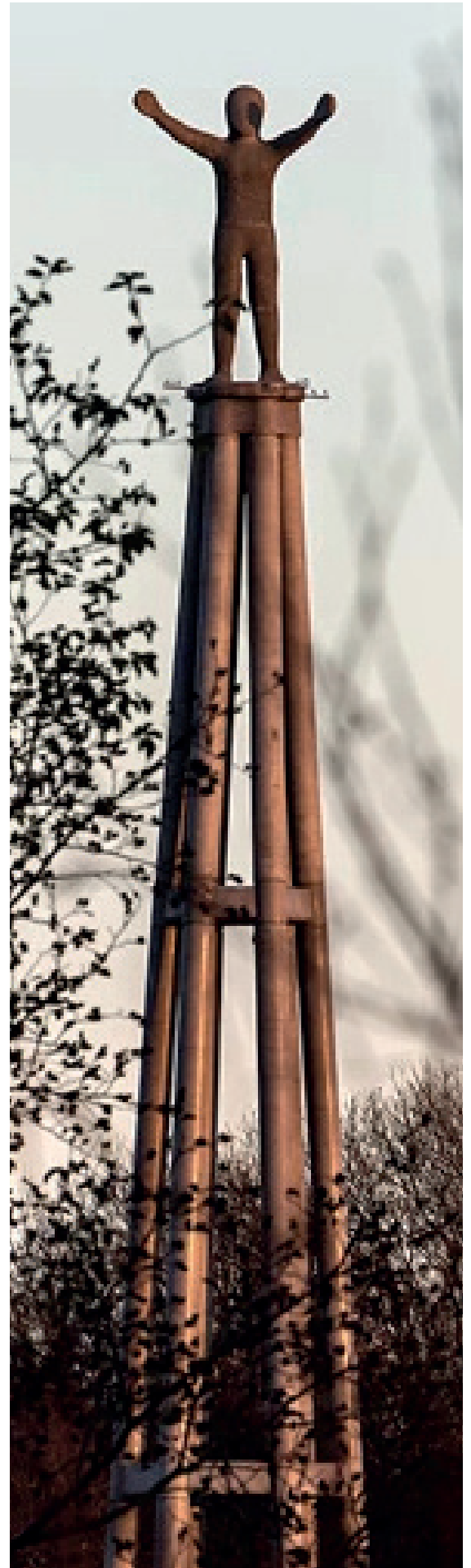


## The Challenge

The Hope Sculpture was to be constructed and installed at Glasgow's Cuningar Loop, a woodland park on the banks of the River Clyde.

All materials are low-carbon, reclaimed, recycled or sustainable, with the project achieving a 75% lower carbon impact compared to traditional techniques.

NSS was asked to assess the feasibility of providing access for waterproofing work. This work would need to take place once the structure was in place, so specialist understanding of the challenges and risks of working at such height was essential.



## Our Solution

The team visited the site and carried out a detailed investigation to determine the scope of the works. Our specialists ultimately recommended use of a Palfinger Wumag Access Platform, which can be safely used at heights of up to 53 metres.

Local sourcing (wherever possible) was key to meeting the project's sustainability targets. NSS could contribute to this because our national coverage meant a suitable machine was available in our nearby Falkirk depot.

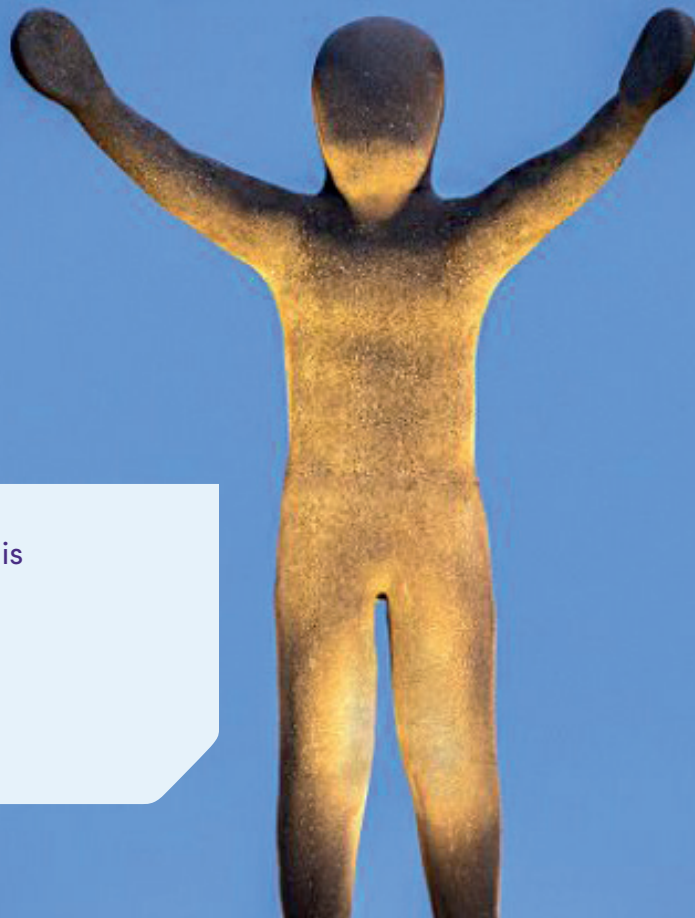
Over the course of 3 days, we supplied the platform and a trained, specialist operative to ensure the safe and effective completion of the waterproofing work.



## The Result

NSS and other companies provided services free of charge, and the sculpture now stands as a testament to what can be achieved through collaboration and a commitment to succeed.

It is complemented by two smaller sculptures – the Beacon of Hope at Glasgow Central Station and the Hope Triptych at the University of Strathclyde. Messages promoting positive mental health, composed by Scottish poets, writers and local schoolchildren, have been inscribed on each.



For further information on this case study please contact:

**NSS Sales**

**03459 677477 (option 2)**

