

Tiandy New Product Introduction



New Mini Family



Tiandy

NEW MINI FAMILY

All support VCA
Cable free design
Excellent quality
Easy install, IP67

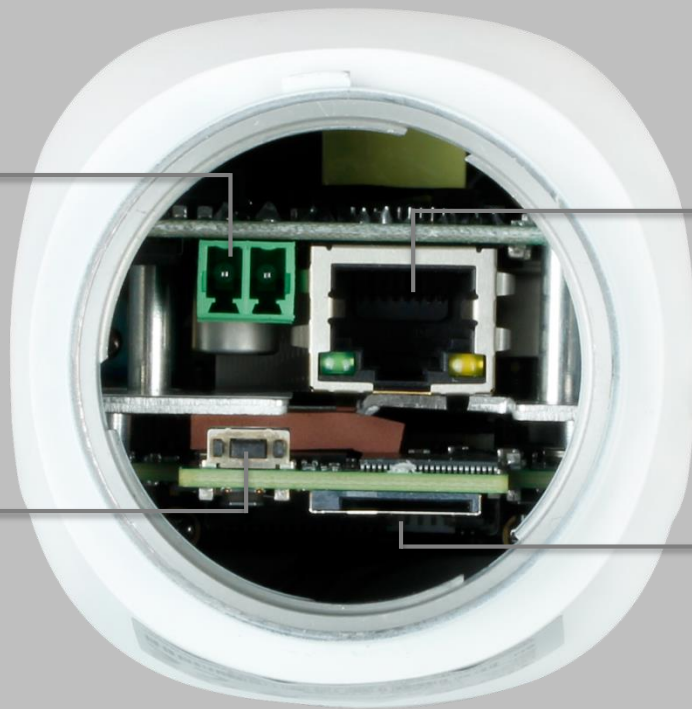


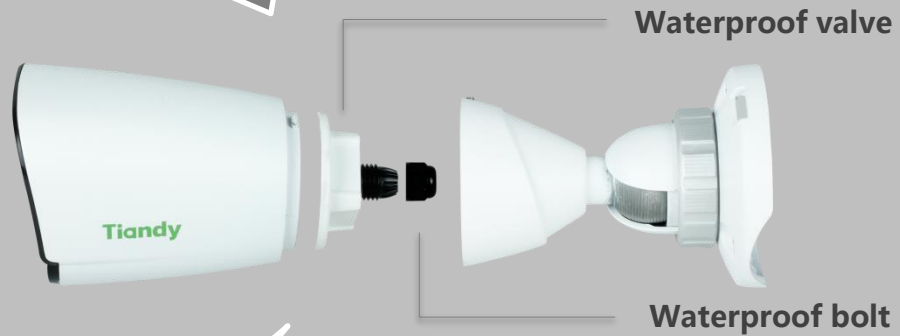
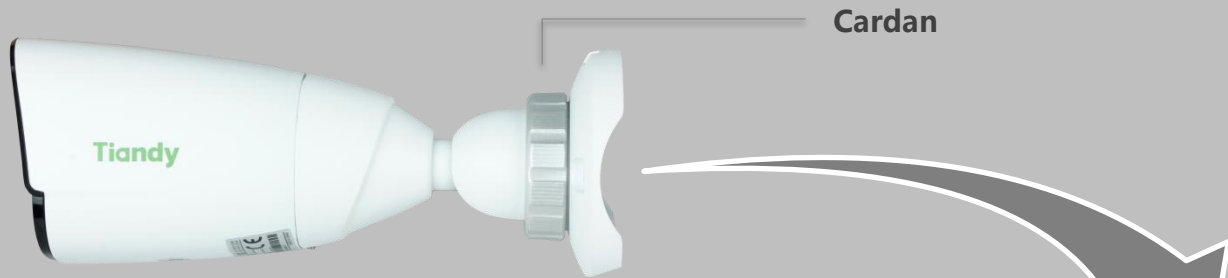
DC 12V/GND

RJ 45

Reset button

TF Card Slot





RJ45



Waterproof
Rubber

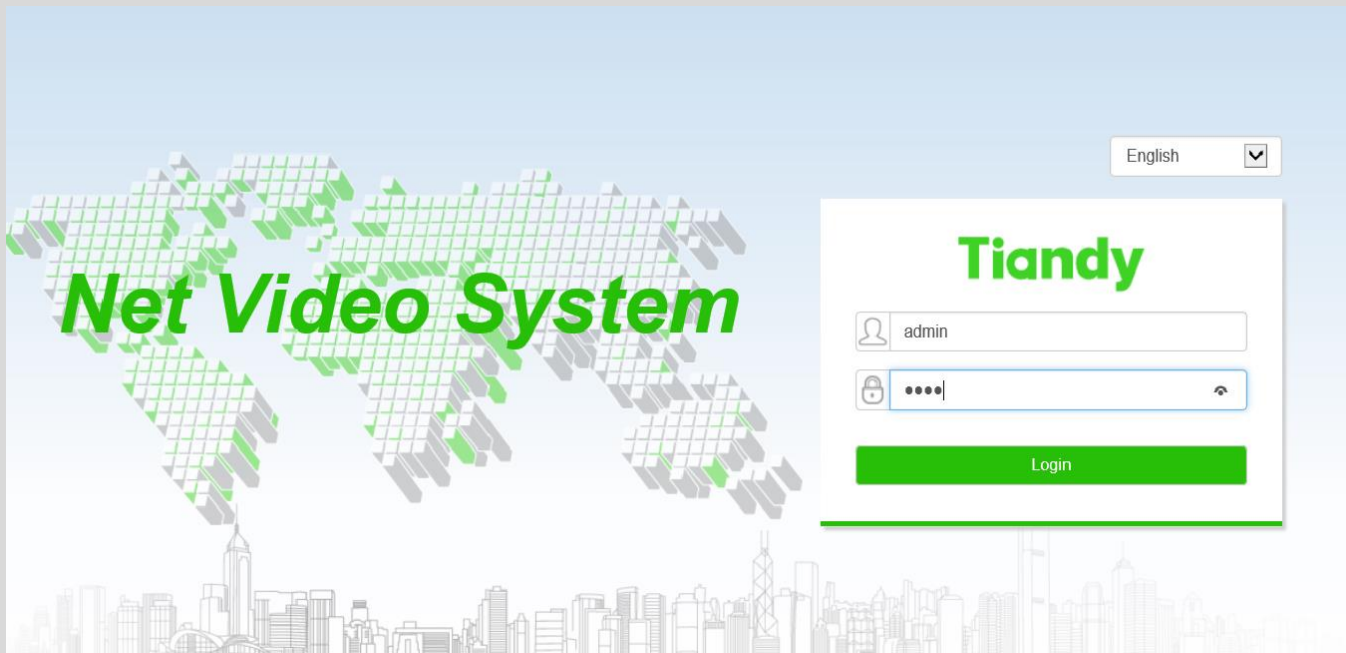


DC 12V/GND
Audio in



Reset button

TF Card Slot



New Web without Plug-in



Compatible with IE
Chrome Firefox Safari EDGE

Tiandy New Product Introduction



Fisheye Camera



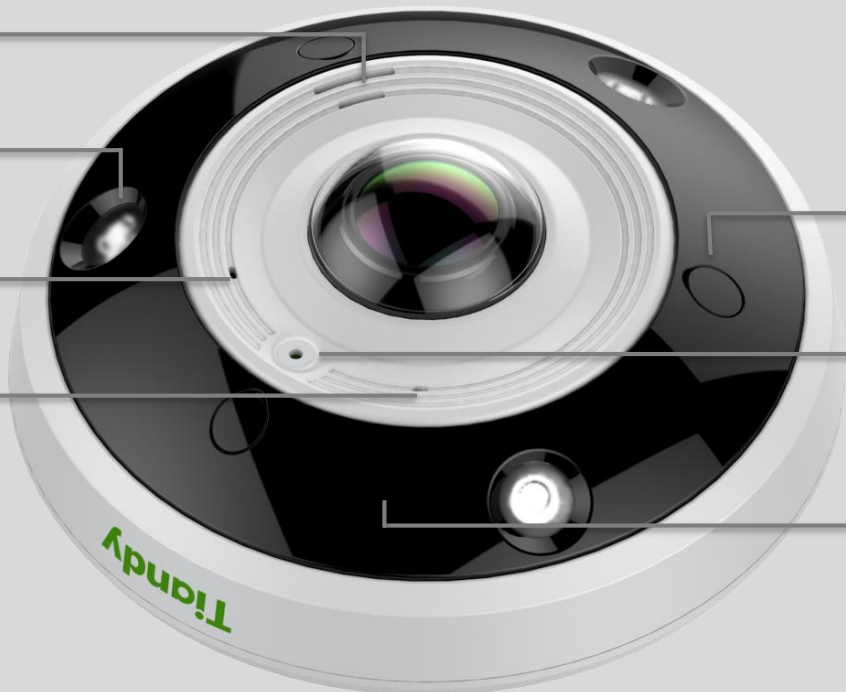
FISHEYE IS COMING

TIANDY 12MP FISHEYE CAMERA LAUNCHED

**360° panoramic, 12MP resolution,
Heat map, Support VCA,
Support Tracking**

Tiandy





Speaker

White Light

Built-in Mic

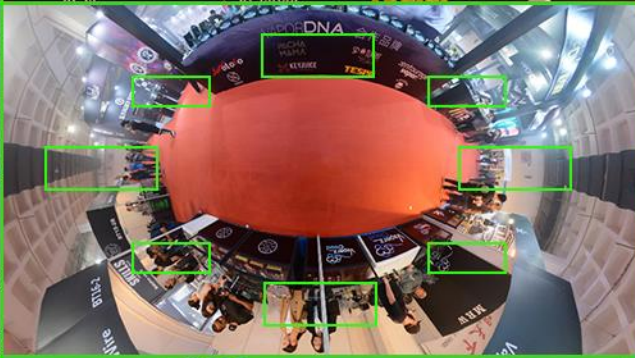
Screw

Sensitivity Sensor

IR Light

T!andy

360° Panoramic + 8PTZ



Cover and contain everything

Tracking



Both panoramic surveillance and tracking details

Early-Warning

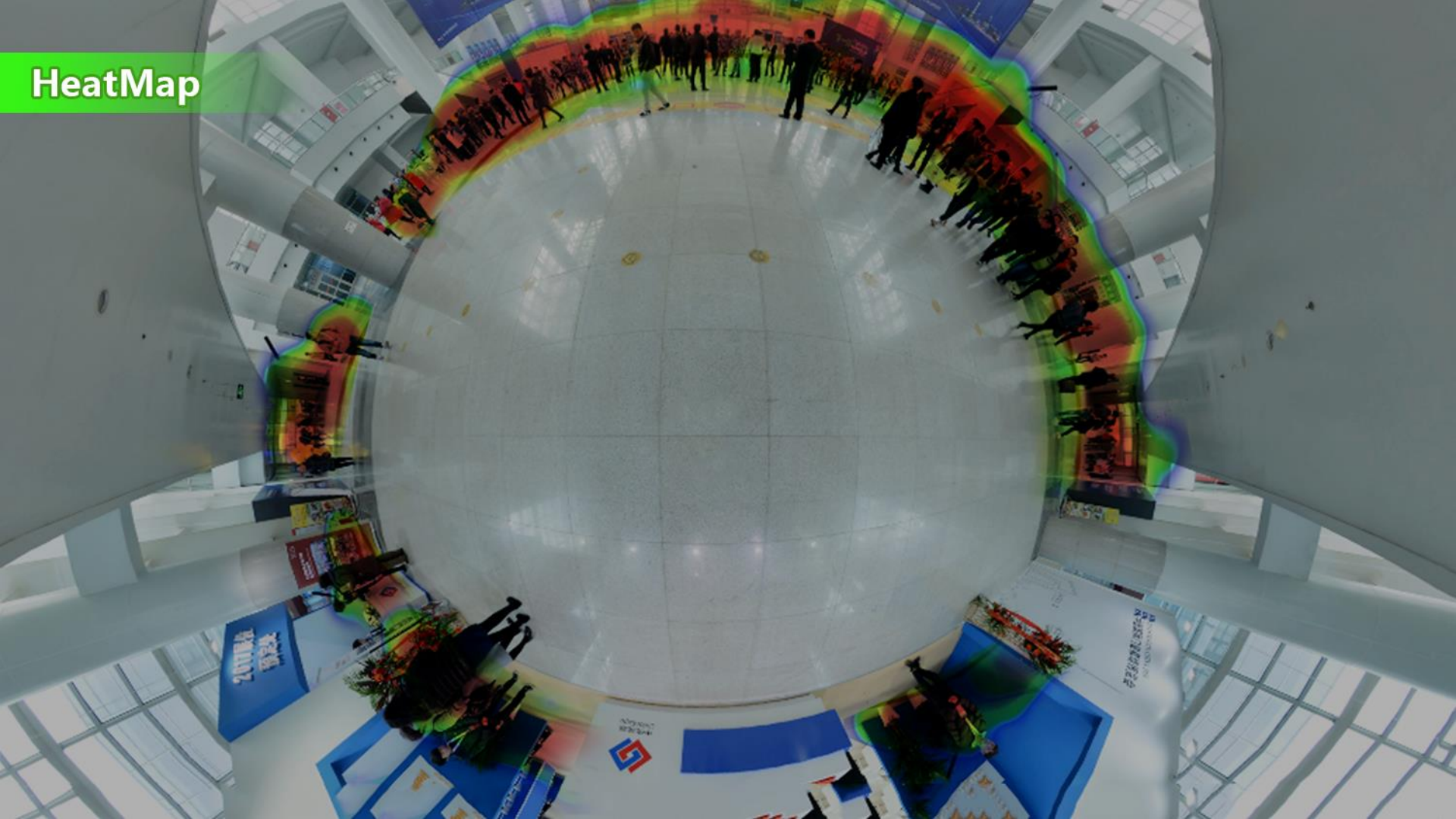


Step Away






**Nip in the bud
No warning no security**

HeatMap



Comparison

Brand	Tiandy	Hikvision	Dahua
Appearance			
Sensor	1/1.7" CMOS	1/1.7" CMOS	1/2.3" CMOS
Res/fps	12MP(4000 × 3072)	12MP(4000 × 3072)/20fps	12MP (4000x3000) /15fps
Coding mode	H.265/H.264/MJPEG	H.264/MJPEG	H.264H/MJPEG/JPEG
Heat map	Y	Y	N/A
Tracking	Y	N/A	N/A
VCA	Tripwire/Perimeter/ Early warning	Tripwire/Perimeter	N/A
IR range	15m	15m	10m
Protection range	IP66/IK10	IP66/IK10	IP67/IK10
White Light	Y	N/A	N/A
Built in mic	Y	Y	Y
Built in speaker	Y	Y	N/A
Audio in/out	2/2(ACC mode supports dual channel input/output)	1/1	1/1
Alarm in/out	2/1	1/1	2/1
RS485	Y	Y	N/A
Built in SD slot	256GB	128GB	128GB
Power supply	DC12V/AC24V/POE	DC12V/POE	DC12V/POE
Operating Conditions	-30°C~60°C	-30°C~60°C	-30°C~60°C

Features

New Mini

Model:



H.264 2MP standard:

TC-NC214

TC-NC252

H.265 2MP starlight:

TC-NC214S

TC-NC252S

H.265 4MP:

TC-NC414

TC-NC452

Features:

For Hardware:

1. Cable free design , easy to install
2. Complete interface
3. Multiple waterproof , IP67 (Dome are IK10)

For Software:

4. Support multiple VCA function
5. Support S+265, reduce 70% bandwidth max
6. 2MP Starlight , ultra low illumination 0.002Lux
7. The 4MP Mini camera can support face detection and people counting function after firmware upgrade.
8. 2MP starlight and 4MP can support new web plug-in free, can use on *Chrome Firefox Safari EDGE browser*

Features:

Fisheye

Model:TC-NC1261



Features:

For Hardware:

1. Built-in Mic , Built-in Speaker
2. Rich interface
3. Support white light, only Tiandy support

For Software:

4. 12MP Panoramic display
5. Support H.265, only tiandy support
6. Support Tripwire / perimeter / Early warning VCA function
7. Support Auto-tracking, only tiandy support
8. Support Heat Map, the data can export by space / time

Shop/Market solution

Product list

Fisheye*1---Ceiling mount

Mini Dome*1---Face detection function

Mini Bullet*1---People counting

Fixed bullet/dome*N---Important area

TC-NR5020M7-S2*1---4K NVR , S+265

Tiandy camera and NVR, S+265, can reduce 70% bandwidth. High cost performance.



Tiandy

NVR Full Series Updating

——Give you a new experience

Tiandy

Tiandy

NVR FULL SERIES UPDATING

GIVE YOU A NEW EXPERIENCE

**S+265, Smart, Secure
Convenient, Quick**



Tiandy



All new appearance

Streamline design

With new firmware

Add some new function

E-Zoom

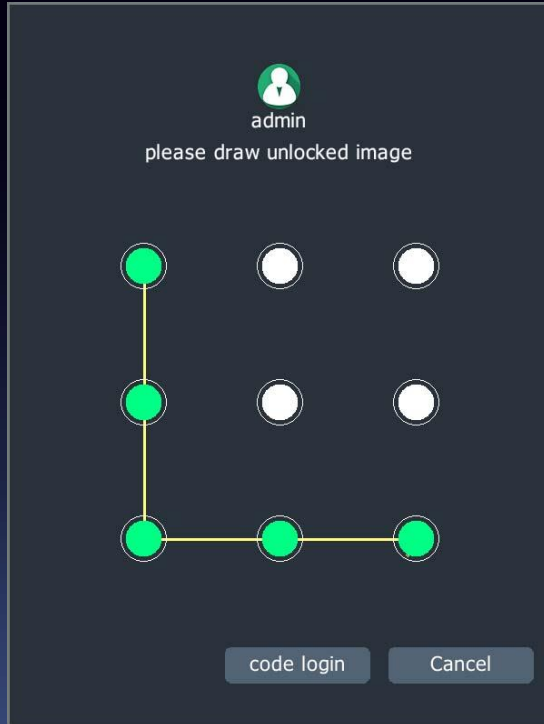


In E-Zoom interface

Slide mouse wheel to adjust zoom

Dragging mouse change the area of view

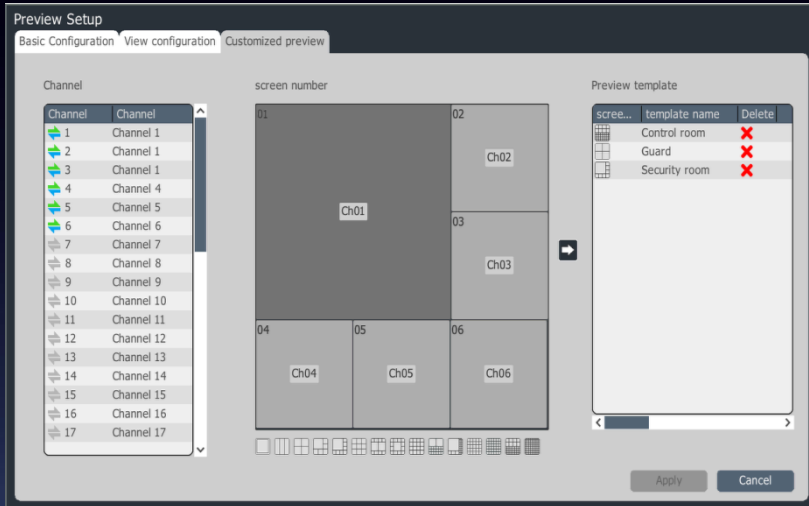
Graphic Unlock



Newly add graphic unlock feature

Unlock NVR by drawing image

Custom preview menu



Set up multiple custom preview templates

Easy to preview, watch what you want

System Status

Disk No.	Disk status	Size	Free	Property	Disk Group
SATA1	Normal	5.45T	4.69T	R/W	1

Channel
Video
Alarm
Network
Disk

Stick out a mile !

Password Recovery

set code protection question

Question 1	Which is your favorite book ?
Answer	Which is your favorite book ? What is your first phone number ? Customize
Question 2	Which is the first dish you made ?
Answer	

Please delete the previous if you want to change code

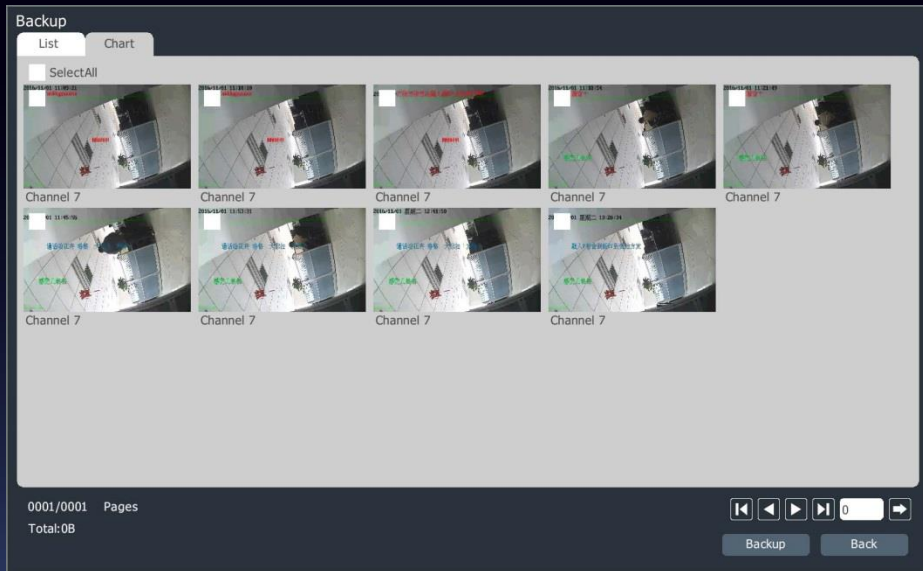
Confirm Delete Cancel

Edit security question

Recovery password easily

Question support customized

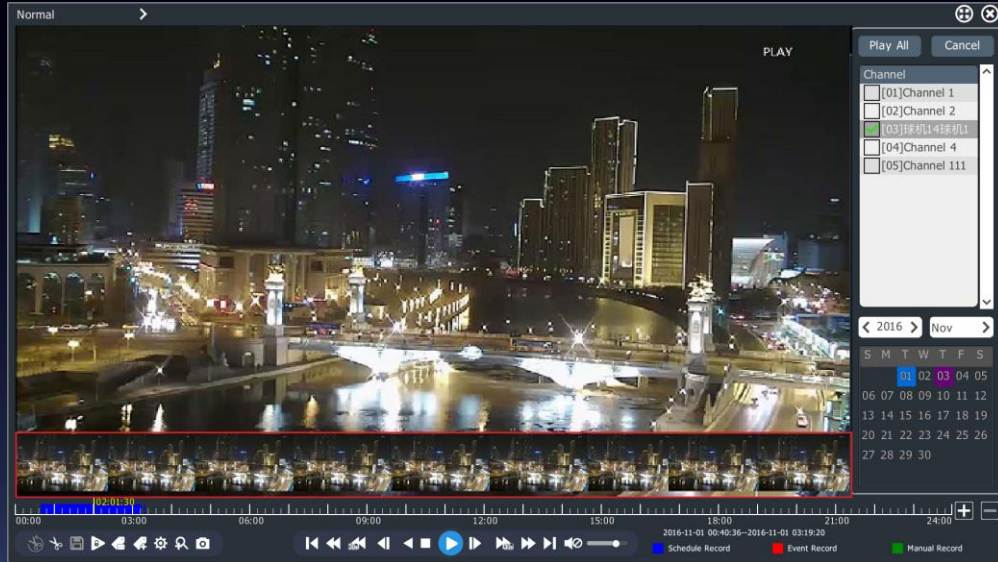
Live Photo



Click photo and playback 10s

Easy browsing, backup you need

Quick Shoot



Ten pictures quick shoot display

Find the key video you need fast

Batch Import Channel Config

Cameras

Basic Configuration Config IPC Central Management POE power Information

Channels

Stream Setup

Video Setup

OSD

Configuration Import/Export

Device Name USB1-1 File Type xls

Chn NO.	Enable	Server Type	Server Url	Server Proxy	Chn Type	Chn NO.	Net Mode	Connect Moc	Server Port	Mult IP	Mult Port	User Name	Password	Decryrtspurl	Preview Mode
1	1	Private	10.30.31.19		0	3	0	0	3000	0.0.0.0	0	Admin	1111	0.0.0.0	0
2	1	Private	10.30.31.127		0	0	0	0	3000	0.0.0.0	0	Admin	1111	0.0.0.0	0
3	1	Private	10.30.31.203		0	0	0	0	3000	0.0.0.0	0	Admin	1111	0.0.0.0	0
4	1	Private	10.30.31.205		0	0	0	0	3000	0.0.0.0	0	Admin	1111	0.0.0.0	0
5	1	Private	10.30.31.214		0	0	0	0	3000	0.0.0.0	0	Admin	1111	0.0.0.0	0

Refresh Import Export

Back

Edit channel config in Excel

Batch import channel information

One-key import, quick config

Back-up Identification

The screenshot shows a 'Backup' configuration window. On the left, there is a vertical list of settings: Channel, Range, Type, Start Date, Start Time, End Date, End Time, Target, and File Format. The 'Channels' section is expanded, showing a row of eight checkboxes labeled 01 through 08. A 'code verification' dialog box is overlaid on top, containing fields for 'Username' (with 'Admin' entered) and 'Password' (with a masked input). At the bottom of the dialog are 'Confirm' and 'Cancel' buttons. At the bottom of the main window are 'Backup', 'inquiry and ...', and 'Back' buttons.

Enable back-up identification

Re-enter administrator account

Ensure file security

Channel Permission

User Permission Management

Local Permission Remote Permission Channel Permission

Permission Options local preview >

Channels

<input checked="" type="checkbox"/> 01	<input checked="" type="checkbox"/> 02	<input checked="" type="checkbox"/> 03	<input checked="" type="checkbox"/> 04	<input checked="" type="checkbox"/> 05	<input type="checkbox"/> 06	<input type="checkbox"/> 07	<input type="checkbox"/> 08
<input type="checkbox"/> 09	<input type="checkbox"/> 10						

Confirm Cancel

Assign channel permissions for different users. Include:

Local Preview

Remote Preview

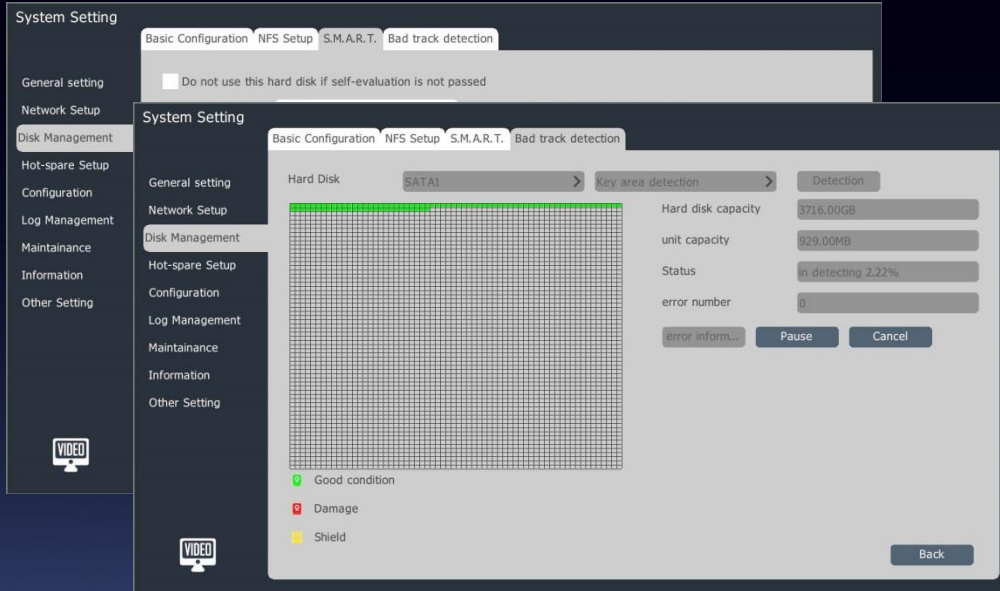
Local playback

Remote playback

Local PTZ control

Remote PTZ control

S.M.A.R.T Disk and Bad Block Detection

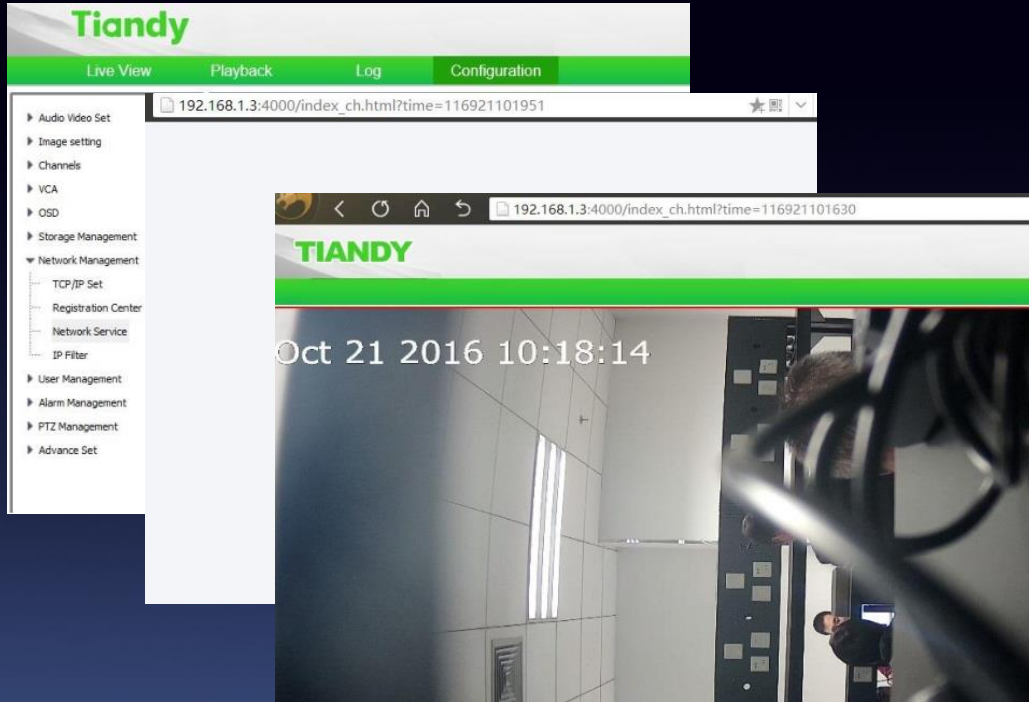


Disk smart detection

Ensure data security

Easy maintenance

Port Penetration



PSE series NVR

Support port penetration

Access camera IE directly

U Disk Automatic Detection

Mobile devices are detectable ⊗

Name

Capacity

After insert U disk

Popup operation wizard automatically

Convenient and quick

Alarm linkage plan

System Setting

Basic Settings Plan setting

General setting

No.	Plan name	Plan content	Edit
1	Alarm	Tell Police!!!	Edit

Network Setup

Disk Management

Configuration

Log Management

Maintenance

Information

Other Setting

VIDEO

Edit

No.

Plan name

Plan content

Confirm Cancel

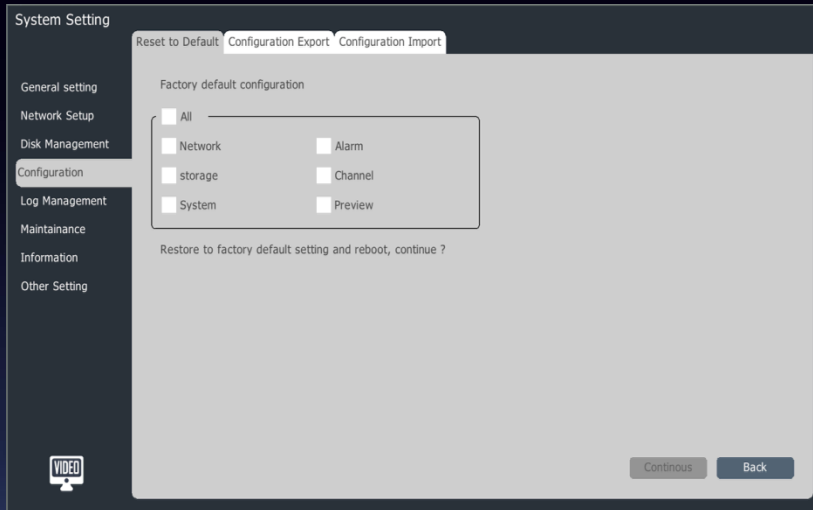
Alarm trigger

Plan popup

Tell Police!!!

Danger eliminate

Restore Default

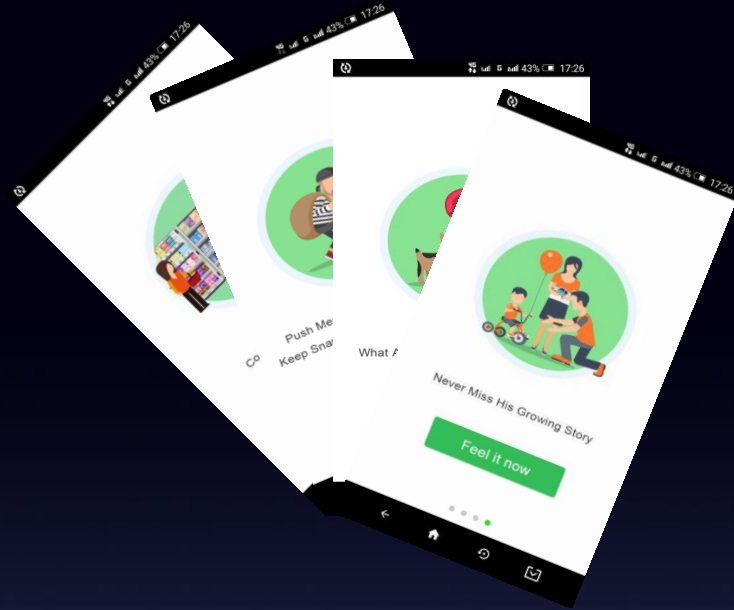
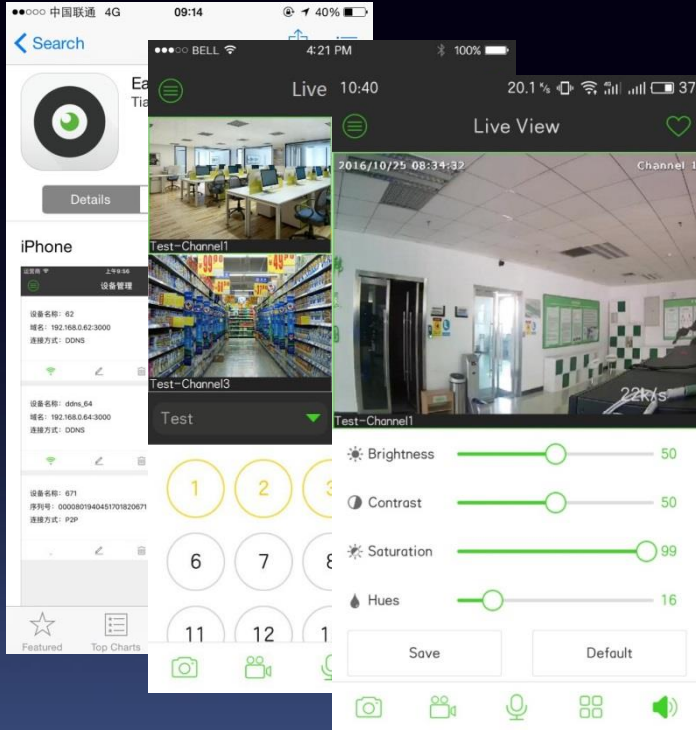


Modular reset

According to your needs

Tiandy

New APP EasyLive



EasyLive

Give you a new easy life...

PTZ Control

Single screen preview interface

Drag mouse on image directly to control PTZ rotation motion

Slide mouse wheel to adjust zoom

Other new functions

Full series support Early warning function

Add three screen preview for corridor mode

Add channel number display in preview interface

Enter error password multiple times, send e-mail automatically

Auto assign hard disk group for each channel

Tiandy New Product Introduction



To be continue...

